



Asian Football Confederation

AFC STADIUM LIGHTING GUIDELINES

2018

Contents

Section	Reference	Page
1	Introduction	5
2	Design guide	6
2.01	Principle Points	6
3	AFC competition categories	7
3.01	New stadiums	7
3.02	Existing stadiums	7
3.03	Illuminance levels	7
3.04	Overview of illuminance levels for AFC competitions	8
4	AFC illuminance categories	9
4.01	AFC Lighting Category 1	10
4.02	AFC Lighting Category 2	11
4.03	AFC Lighting Category 3	12
4.04	AFC Lighting Category 4	13
4.05	AFC Lighting Category 5	14
5	Illuminance design guidelines	15
5.01	Players and officials	15
5.02	Spectators	15
5.03	Broadcasters and media	15
5.04	Luminaire mounting positions	15
5.05	Floodlight luminaire mounting guide	16
6	Diagrams of design guidelines	18
6.01	Corners-column/tower floodlight array	18
6.02	Linear-roof rim lighting	19
6.03	Player face modelling	20
6.04	Column positions	21
6.05	Corners-linear floodlight array	22
6.06	Pitch perimeter-lateral distance	23
6.07	Pitch perimeter-luminaire mounting zone	24
6.08	Pitch perimeter-second linear row	25
6.09	Luminaires' focus point angle	26
6.10	Pitch sides-luminaire mounting position	27
6.11	Behind penalty area - luminaire mounting zone	28

6.12	Behind goal line – luminaire mounting zone	29
6.13	Behind goal line–second linear row	30
6.14	AFC Pitch Dimensions	31
7	Uniformity of illuminance	32
8	Glare	33
8.01	Glare	33
8.02	Discomfort glare	33
8.03	Evaluation of glare	33
9	Pitch illuminance switch mode (PISM)	34
9.01	Full match mode	34
9.02	Match continuity mode	34
9.03	Training mode	34
9.04	Maintenance mode	34
10	Flicker Factor (FF)	35
10.01	Flicker factor guidance	35
10.02	Flicker factor reference table	36
10.03	Flicker factor with three-phase power supply	36
10.04	Flicker factor testing	37
10.05	12-point flicker factor test	37
10.06	Flicker factor test reference points for 12-point high frequency test	38
11	Minimum adjacent uniformity ratio (MAUR)	39
11.01	MAUR on the horizontal plane	39
11.02	MAUR on the vertical plane	40
12	Colour temperature	41
12.01	Colour temperature guide	41
13	Colour rendering	42
13.01	Chromaticity Test	43
14	Player shadows	44
15	Maintenance factor	46
16	Power supply	47
16.01	AFC power supply—Level 1	48
16.02	AFC power supply—Level 2	49
16.03	AFC power supply—Level 3	50
16.04	AFC power supply—Level 4	51
17	LED pitch perimeter display systems	52

18	TV broadcast camera plan	53
18.01	Key to camera plan	54
19	Environmental guidance	55
19.01	Environmental impact of illuminance	55
19.02	Environmental impact of glare	55
20	AFC illuminance test report	56
20.01	Pitch illuminance test	56
20.02	AFC illuminance test procedure	57
20.03	AFC illuminance test report template	58
	Horizontal illuminance grid plan	59
	Vertical illuminance grid plan	60
	Illuminance test—pitch orientation plan	61
	Summary of report data	62
	Pitch illuminance power supply	63
	Measurement of illuminance	64
21	Glossary of terms	65

1 Introduction

This document contains a set of guides that have been developed to provide detailed technical information and guidance on floodlighting for football stadiums.

AFC's floodlighting requirements are listed in the AFC Stadium Regulations, with further stipulations in the respective competition regulations and manuals. For finals or final tournaments, the staging agreements may include specific clauses regarding floodlighting that is not included in this guide.

The AFC Stadium Lighting Guidelines 2018 should be used by AFC member associations and specifiers in order to develop the appropriate illuminance conditions at stadiums in the AFC region. The guide also takes into account recent technological developments and broadcasting requirements to support stadium owners who are looking to install a high-quality system that is tailored to the current and anticipated future broadcasting environment and AFC's competition requirements.

During the design process of a pitch illuminance system the efficiency should be evaluated and an environmentally aware solution should always be specified.

This lighting guide has been written by **International Illuminance Services (IIS)** on behalf of the AFC to ensure the adoption of best practices in pitch illuminance system design in all AFC stadiums to comply with the illuminance requirements as stipulated in the AFC Stadium Lighting Guidelines 2018.

2 Design guide

This document provides guidelines for the artificial illuminance systems used for football pitches. The principles applied to the design elements and how you apply these principles and combine them together in one design will determine how successful the design is.

The following main points should be considered and applied when designing a new pitch illuminance system or making alterations to an existing system.

2.01 Principle Points

1. It is essential that player comfort and performance is not hindered by the pitch illuminance system.
2. The ability of match officials to perform effectively should not be hindered by the pitch illuminance system.
3. A spectator should be able to watch and enjoy the match without suffering any discomfort caused by the pitch illuminance system.
4. The pitch illuminance system should provide a level of illuminance that enables television broadcasters to operate effectively in conjunction with the requirements set out for the relevant AFC illuminance category of competition.
5. The relevant level of AFC competition must be established when assessing a stadium's needs and to determine the appropriate lighting category.
6. A successful pitch illuminance system will produce illuminance levels and uniformity that comply with the requirements of the relevant AFC illuminance level, with soft shadows where possible.
7. The pitch illuminance system must be reliable and effective for the given location. The specific environmental conditions that are relevant for the stadium location should be carefully assessed.
8. The pitch illuminance system should provide a long-term solution that is both efficient and cost-effective.
9. The environmental impact of a pitch illuminance design solution should be carefully assessed. The design team should be committed to achieving an environmentally responsible solution. The light source for all new stadiums in the AFC category 1, 2 and 3 should be provided by LED luminaires. It is recommended LED luminaires are used in AFC category 4 and 5 stadiums and only for specific reasons should HID luminaires be used for new installations.
10. Every sports stadium is unique. Consequently, each stadium will require a design solution that is appropriate for the relevant stadium and illuminance level.
11. The stadium's infrastructure and design will have a significant impact on the type of pitch illuminance system that can be applied. A four-corner tower/column system will not generally meet the AFC's illuminance requirements for AFC Category 1 stadiums.
12. Modern artificial lighting systems are able to provide high-quality illuminance conditions on the pitch and may potentially be integrated into the architectural design of the stadium.

3 AFC competition categories

It is essential to ascertain the level of AFC competition that the stadium is intended to be used for. The pitch illuminance system should be designed to meet the requirements of the relevant AFC competition category. An illuminance system that operates to a higher specification than is necessary may be unduly expensive to install and operate. In some situations, it may even be considered inappropriate given the stadium's size and location. However, it is also important that the design process gives due consideration to long-term aspirations in terms of the intended use of the stadium. It may be preferable to comply with the requirements of a higher AFC category to allow for future development.

Guidance for the selection of the relevant AFC category is provided in Section 3.04.

3.01 New stadiums

During the design process for new stadiums, these guidelines should be used for guidance to determine the level of illuminance that is required. Once the installation of the illuminance system (i.e. floodlights) has been completed, a AFC illuminance test report should be submitted to the AFC for analysis. A template for that test report can be found in Section 20.

It should be noted that use of energy efficient LED light sources are encouraged by the AFC and recommended as the preferred lights source for pitch illuminance systems. However it remains important that the correct high quality LED light source is specified.

3.02 Existing stadiums

Existing stadiums may want to evaluate their current illuminance system and ascertain how to meet the standards required for the relevant level of competition.

An AFC illuminance test report may be completed and submitted to the AFC for analysis. Information may be provided by the AFC with regard to the current illuminance conditions and any modifications that may be required. A template for that test report is available to in Section 20.

3.03 Illuminance levels

The requirements in terms of the artificial illuminance of a football pitch are split into four illuminance levels. The following table provides details of the recommended illuminance level for each competition round. If there is any uncertainty as to which level applies, AFC should be contacted for further guidance.

Stadiums and football grounds that are not intended to be used for AFC competition or TV broadcasts are not required to meet the higher lighting requirements of AFC levels 1, 2, 3,4 & 5. However, the lighting conditions should still meet the relevant sporting requirements of players, officials and spectators.

3.04 Overview of illuminance levels for AFC competitions

AFC Competitions	AFC Lighting Category								
<table border="1"> <tr> <td data-bbox="145 365 943 421">AFC Asian Cup Finals</td> </tr> <tr> <td data-bbox="145 421 943 483">FIFA World Cup Final Qualification Round</td> </tr> </table>	AFC Asian Cup Finals	FIFA World Cup Final Qualification Round	AFC Lighting Category 1						
AFC Asian Cup Finals									
FIFA World Cup Final Qualification Round									
AFC Champions League (ACL) Finals	AFC Lighting Category 2								
<table border="1"> <tr> <td data-bbox="145 672 943 728">ACL Group Stage, R16, Quarter/Semi Finals</td> </tr> <tr> <td data-bbox="145 728 943 784">AFC Cup (ACC) Final</td> </tr> <tr> <td data-bbox="145 784 943 840">AFC U23 Asian Cup Finals</td> </tr> <tr> <td data-bbox="145 840 943 920">AFC Women's Asian Cup Finals</td> </tr> </table>	ACL Group Stage, R16, Quarter/Semi Finals	AFC Cup (ACC) Final	AFC U23 Asian Cup Finals	AFC Women's Asian Cup Finals	AFC Lighting Category 3				
ACL Group Stage, R16, Quarter/Semi Finals									
AFC Cup (ACC) Final									
AFC U23 Asian Cup Finals									
AFC Women's Asian Cup Finals									
<table border="1"> <tr> <td data-bbox="145 969 943 1025">AFC Asian Cup Qualifiers Final Round</td> </tr> <tr> <td data-bbox="145 1025 943 1081">ACL Preliminary, Playoff Stage</td> </tr> <tr> <td data-bbox="145 1081 943 1137">ACC Group Stage, Knockout Stage (excluding Final)</td> </tr> <tr> <td data-bbox="145 1137 943 1193">AFC U23 Asian Cup Qualifiers</td> </tr> <tr> <td data-bbox="145 1193 943 1249">AFC U20/U17 Asian Cup Finals</td> </tr> <tr> <td data-bbox="145 1249 943 1305">AFC U20/U17 Women's Asian Cup Finals</td> </tr> <tr> <td data-bbox="145 1305 943 1361">AFC Women's Asian Cup Qualifiers</td> </tr> <tr> <td data-bbox="145 1361 943 1440">Preliminary Joint Qualification Round 2</td> </tr> </table>	AFC Asian Cup Qualifiers Final Round	ACL Preliminary, Playoff Stage	ACC Group Stage, Knockout Stage (excluding Final)	AFC U23 Asian Cup Qualifiers	AFC U20/U17 Asian Cup Finals	AFC U20/U17 Women's Asian Cup Finals	AFC Women's Asian Cup Qualifiers	Preliminary Joint Qualification Round 2	AFC Lighting Category 4
AFC Asian Cup Qualifiers Final Round									
ACL Preliminary, Playoff Stage									
ACC Group Stage, Knockout Stage (excluding Final)									
AFC U23 Asian Cup Qualifiers									
AFC U20/U17 Asian Cup Finals									
AFC U20/U17 Women's Asian Cup Finals									
AFC Women's Asian Cup Qualifiers									
Preliminary Joint Qualification Round 2									
<table border="1"> <tr> <td data-bbox="145 1489 943 1545">AFC Asian Cup Qualifiers Playoff Round</td> </tr> <tr> <td data-bbox="145 1545 943 1601">ACC Preliminary, Playoff Stage</td> </tr> <tr> <td data-bbox="145 1601 943 1657">AFC Solidarity Cup</td> </tr> <tr> <td data-bbox="145 1657 943 1713">AFC U20/U17 Asian Cup Qualifiers</td> </tr> <tr> <td data-bbox="145 1713 943 1769">AFC U20/U17 Women's Asian Cup Qualifiers</td> </tr> <tr> <td data-bbox="145 1769 943 1839">Preliminary Joint Qualification Round 1</td> </tr> </table>	AFC Asian Cup Qualifiers Playoff Round	ACC Preliminary, Playoff Stage	AFC Solidarity Cup	AFC U20/U17 Asian Cup Qualifiers	AFC U20/U17 Women's Asian Cup Qualifiers	Preliminary Joint Qualification Round 1	AFC Lighting Category 5		
AFC Asian Cup Qualifiers Playoff Round									
ACC Preliminary, Playoff Stage									
AFC Solidarity Cup									
AFC U20/U17 Asian Cup Qualifiers									
AFC U20/U17 Women's Asian Cup Qualifiers									
Preliminary Joint Qualification Round 1									

4 AFC illuminance categories

The AFC illuminance categories are devised to ensure that the correct and appropriate illuminance conditions are provided at all AFC stadiums. The highest level of AFC Lighting Category is 1 and the level of requirements reduce across category 2, 3 and 4 and is concluded at AFC Lighting Category 5.

The requirements of the illuminance conditions are arranged to ensure that all AFC stadiums are able to operate effectively and efficiently. The AFC do not wish to burden smaller stadiums and clubs with the high costs of a pitch illuminance system that is over-specified for the size of stadium and/or the level of competition that the stadium will be used for.

However, it is also important that the correct AFC Lighting category is appointed to all AFC Stadiums to ensure that the commercial obligations to provide the optimal illuminance conditions at any given stadium and competition are provided to allow TV and media broadcasters to operate effectively.

The illuminance requirements for each AFC Lighting Category are provided on tables 4.01 to 4.05 on pages 10, 11, 12, 13 & 14 of this guide.

4.01 AFC Lighting Cat 1

AFC Lighting Category 1

Eh ave (average horizontal illuminance)	average > 2,400 lux
Uniformity U1h	> 0.50
Uniformity U2h	> 0.70
Ev ave-0° (vertical illuminance on 0° reference plane)	minimum > 800 lux average > 1,200 lux
Uniformity U1v-0°	> 0.40
Uniformity U2v-0°	> 0.50
Ev ave-90° (vertical illuminance on 90° reference plane)	minimum > 800 lux average > 1,200 lux
Uniformity U1v-90°	> 0.40
Uniformity U2v-90°	> 0.50
Ev ave-180° (vertical illuminance on 180° reference plane)	minimum > 800 lux average > 1,200 lux
Uniformity U1v-180°	> 0.40
Uniformity U2v-180°	> 0.50
Ev ave-270° (vertical illuminance on 270° reference plane)	minimum > 800 lux average > 1,200 lux
Uniformity U1v-270°	> 0.40
Uniformity U2v-270°	> 0.50
Match continuity mode (MCM)	Eh ave > 2,400 lux Ev4 ave > 1,200 lux
Flicker factor (FF)	average < 5% maximum < 5%
Minimum adjacent uniformity ratio (MAUR)	> 0.60
Colour temperature (Tk)	5,000–6,200K
Colour rendering (Ra)	80 Ra
Glare rating (GR)	< 50
Maintenance factor (MF)	0.9 LED or 0.8 HID
Power supply	AFC Power Level 1

4.02 AFC Lighting Cat 2

AFC Lighting Category 2

Eh ave (average horizontal illuminance)	average > 2,000 lux
Uniformity U1h	> 0.50
Uniformity U2h	> 0.70
Ev ave-0° (vertical illuminance on 0° reference plane)	minimum > 700 lux average > 1,100 lux
Uniformity U1v-0°	> 0.40
Uniformity U2v-0°	> 0.50
Ev ave-90° (vertical illuminance on 90° reference plane)	minimum > 700 lux average > 1,100 lux
Uniformity U1v-90°	> 0.40
Uniformity U2v-90°	> 0.50
Ev ave-180° (vertical illuminance on 180° reference plane)	minimum > 700 lux average > 1,100 lux
Uniformity U1v-180°	> 0.40
Uniformity U2v-180°	> 0.50
Ev ave-270° (vertical illuminance on 270° reference plane)	minimum > 700 lux average > 1,100 lux
Uniformity U1v-270°	> 0.40
Uniformity U2v-270°	> 0.50
Match continuity mode (MCM)	Eh ave > 2,000 lux Ev4 ave > 1,100 lux
Flicker factor (FF)	average < 5% maximum < 5%
Minimum adjacent uniformity ratio (MAUR)	> 0.60
Colour temperature (Tk)	5,000–6,200K
Colour rendering (Ra)	80 Ra
Glare rating (GR)	< 50
Maintenance factor (MF)	0.9 LED or 0.8 HID
Power supply	AFC Power Level 1

4.03 AFC Lighting Cat 3

AFC Lighting Category 3

Eh ave (average horizontal illuminance)	average > 1,800 lux
Uniformity U1h	> 0.50
Uniformity U2h	> 0.70
Ev ave-0° (vertical illuminance on 0° reference plane)	minimum > 600 lux average > 1,000 lux
Uniformity U1v-0°	> 0.40
Uniformity U2v-0°	> 0.50
Ev ave-90° (vertical illuminance on 90° reference plane)	minimum > 600 lux average > 1,000 lux
Uniformity U1v-90°	> 0.40
Uniformity U2v-90°	> 0.50
Ev ave-180° (vertical illuminance on 180° reference plane)	minimum > 600 lux average > 1,000 lux
Uniformity U1v-180°	> 0.40
Uniformity U2v-180°	> 0.50
Ev ave-270° (vertical illuminance on 270° reference plane)	minimum > 600 lux average > 1,000 lux
Uniformity U1v-270°	> 0.40
Uniformity U2v-270°	> 0.50
Match continuity mode (MCM)	Eh ave > 1200 lux Ev4 ave > 700 lux
Flicker factor (FF)	average < 10% maximum < 15%
Minimum adjacent uniformity ratio (MAUR)	> 0.60
Colour temperature (Tk)	5,000–6,200K
Colour rendering (Ra)	80 Ra
Glare rating (GR)	< 50
Maintenance factor (MF)	0.90 LED or 0.8 HID
Power supply	AFC Power Level 2

4.04 AFC Lighting Cat 4

AFC Lighting Category 4

Eh ave (average horizontal illuminance)	average > 1,400 lux
Uniformity U1h	> 0.50
Uniformity U2h	> 0.70
Ev ave-0° (vertical illuminance on 0° reference plane)	minimum > 450 lux average > 750 lux
Uniformity U1v-0°	> 0.40
Uniformity U2v-0°	> 0.50
Ev ave-90° (vertical illuminance on 90° reference plane)	minimum > 450 lux average > 750 lux
Uniformity U1v-90°	> 0.40
Uniformity U2v-90°	> 0.50
Ev ave-180° (vertical illuminance on 180° reference plane)	minimum > 450 lux average > 750 lux
Uniformity U1v-180°	> 0.40
Uniformity U2v-180°	> 0.50
Ev ave-270° (vertical illuminance on 270° reference plane)	minimum > 450 lux average > 750 lux
Uniformity U1v-270°	> 0.40
Uniformity U2v-270°	> 0.50
Match continuity mode (MCM)	Eh ave > 800 lux Ev4 ave > 500 lux
Flicker factor (FF)	average < 12% maximum < 18%
Minimum adjacent uniformity ratio (MAUR)	> 0.60
Colour temperature (Tk)	5,000–6,200K
Colour rendering (Ra)	80 Ra
Glare rating (GR)	< 50
Maintenance factor (MF)	0.9 LED or 0.75 HID
Power supply	AFC Power Level 3

4.05 AFC Lighting Cat 5

AFC Lighting Category 5

Eh ave (average horizontal illuminance)	average > 1,200 lux
Uniformity U1h	> 0.40
Uniformity U2h	> 0.60
Ev ave-0° (vertical illuminance on 0° reference plane)	minimum > 350 lux average > 500 lux
Uniformity U1v-0°	> 0.35
Uniformity U2v-0°	> 0.45
Ev ave-90° (vertical illuminance on 90° reference plane)	minimum > 350 lux average > 500 lux
Uniformity U1v-90°	> 0.35
Uniformity U2v-90°	> 0.45
Ev ave-180° (vertical illuminance on 180° reference plane)	minimum > 350 lux average > 500 lux
Uniformity U1v-180°	> 0.35
Uniformity U2v-180°	> 0.45
Ev ave-270° (vertical illuminance on 270° reference plane)	minimum > 350 lux average > 500 lux
Uniformity U1v-270°	> 0.35
Uniformity U2v-270°	> 0.45
Match continuity mode (MCM)	Eh ave > 300 lux Ev4 ave > 200 lux
Flicker factor (FF)	average < 18% maximum < 25%
Minimum adjacent uniformity ratio (MAUR)	> 0.50
Colour temperature (Tk)	4,200–6,200K
Colour rendering (Ra)	70 Ra
Glare rating (GR)	< 50
Maintenance factor (MF)	0.9 LED or 0.75 HID
Power supply	AFC Power Level 4

5 Illuminance design guidelines

The pitch illuminance system should provide the optimum conditions in accordance with the given illuminance level to ensure that players, officials, spectators and broadcasters are able to perform and enjoy the match without hindrance.

During the design process, the guidelines below should be used in order to develop a high-quality pitch illuminance system that satisfies the requirements of the relevant AFC illuminance category.

5.01 Players and officials

The primary concern should be to give players and officials the optimum conditions in which to perform. The illuminance system should not distract or hinder players or officials during the match.

5.02 Spectators

The illuminance system should provide spectators with an environment that is comfortable and free from glare and allows them to see the match clearly.

5.03 Broadcasters and media

Television broadcasters require the correct illuminance conditions to enable high-quality pictures to be produced. The minimum illuminance levels required for specific competitions are specified in Section 3.04 of this document.

5.04 Luminaire mounting positions

The positioning of floodlight luminaires has a huge impact on the pitch illuminance conditions, this is one of the primary concerns when evaluating the design process. The luminaire mounting positions will have a direct impact on the pitch illuminance level and uniformity for all planes. The mounting positions will also have an impact on the creation of player shadows and the visual comfort experienced by players, officials and spectators.

In recent years, architectural requirements and design aesthetics have challenged the previous illuminance design guidelines. New stadiums are often designed and constructed in ways which require the pitch illuminance system to perform to the required standard while also working in harmony with the architectural design of the stadium.

There are now many examples of stadiums which have pitch illuminance systems that do not conform to the previous guidelines but do provide good illuminance conditions.

AFC recommends that all new pitch illuminance designs focus primarily on ensuring that player comfort is maintained. Design solutions should ensure that the comfort of players, officials and spectators is maintained, while providing good operating conditions for broadcast television. Any new pitch illuminance design/concept that achieves this while also fulfilling AFC's other pitch illuminance requirements will be welcomed.

5.05 Floodlight luminaire mounting guide

Luminaire mounting guide

Ref.	Position	Guidance
6.01	Corners – column/tower floodlight array	To avoid excessive glare around the goal line, particular attention should be paid to the zone within 15° of either side of the goal line. Multiple luminaires, as used in column/tower installations, should not be placed in this zone.
6.02	Linear—roof rim lighting	When pitch illuminance is provided by means of a linear run of luminaires around the stadium roof rim structure, the luminaires should be positioned with sufficient lateral distance to the pitch perimeter
6.03	Player face modelling	The luminous flux must arrive upon players at the correct angle to provide the required face modelling. Dark shadows across players faces should always be avoided irrespective of the direction in which they are facing.
6.04	Column positions	A corner columns should be positioned in the correct position in order to provide the illuminance conditions that will be effective. Generally corner columns should not be used for AFC Lighting Category 1 stadiums unless additional luminaires are installed around the perimeter.
6.05	Corners – linear floodlight array	If the installation design requires luminaires to be positioned within 15° of the goal line, the luminaires' focal point should be outside the penalty area. Luminaires positioned outside the 15° zone may be focused on the penalty area. This is only suitable for linear floodlight arrays.
6.06	Pitch perimeter – lateral distance	An adequate lateral distance between the luminaire mounting positions and the goal lines and side lines should be maintained in order to achieve the required vertical illuminance level around the perimeter of the pitch.
6.07	Pitch perimeter – luminaire mounting zone	As a general guide, the luminaires should be mounted at an angle of no less than 25° and no more than 45° above the centre of the pitch.
6.08	Pitch perimeter – second linear row	The luminaires should be mounted at an angle of no less than 25° and no more than 45° above the centre of the pitch. In order to achieve improved vertical illuminance around the perimeter of the pitch, it may be necessary to install an additional linear row of luminaires with a greater lateral distance from the pitch.

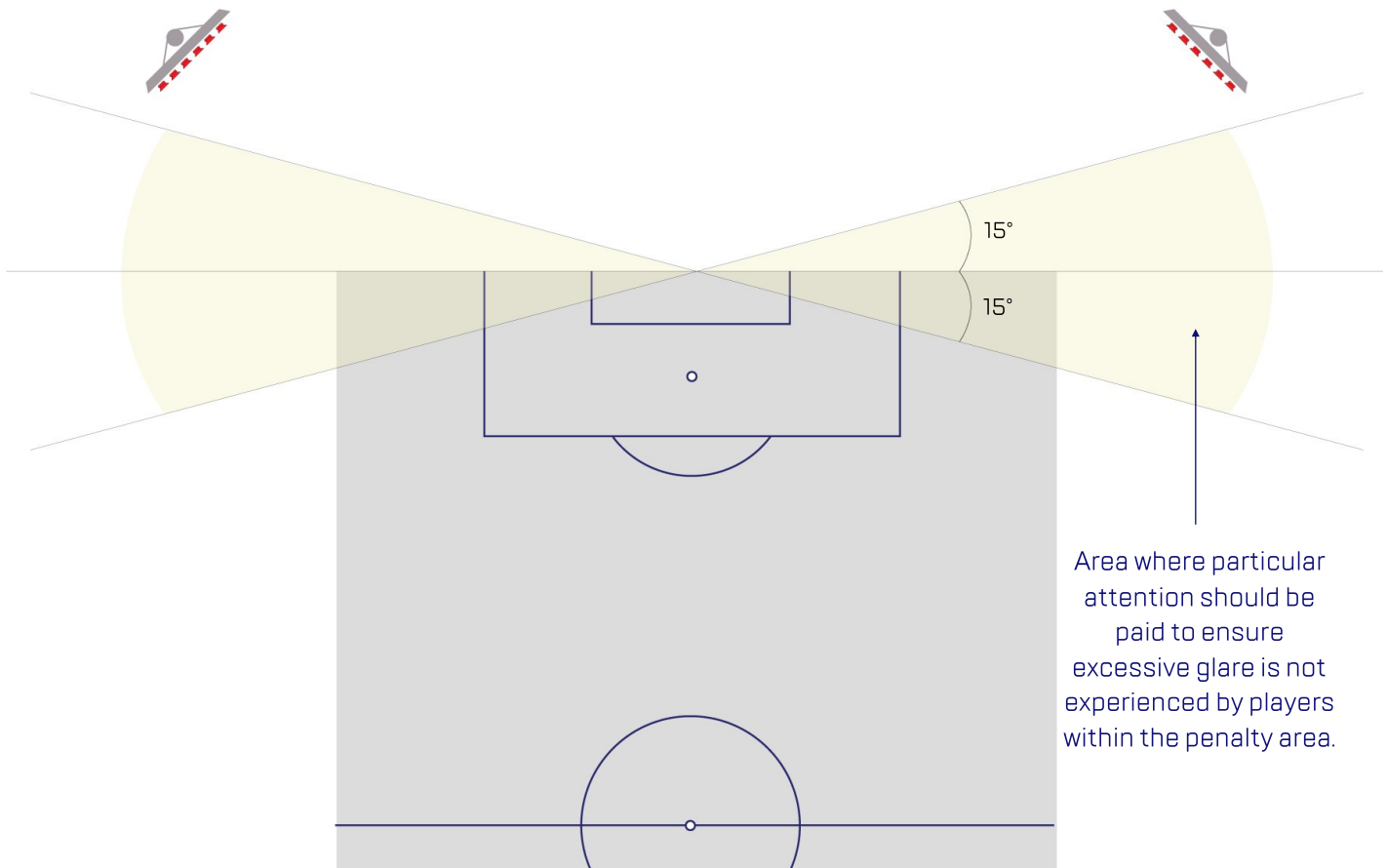
5.05 Floodlight luminaire mounting guide

Luminaire mounting guide

Ref.	Position	Guidance
6.09	Luminaire focus point angle	In order to avoid discomfort glare being experienced by players and officials, a general rule during the design process is to ensure that luminaires' focus point angle is less than 70° from the line perpendicular to the pitch.
6.10	Pitch sides – luminaire mounting position	It is not acceptable for any stadium structures to impede the luminous flux of the pitch lighting system and cause shadows to be cast on the pitch.
6.11	Behind penalty area – luminaire mounting zone	To maintain good visual conditions both for attacking players in front of the goal and for the goalkeeper, luminaires should be mounted more than 60° from the goal line when in line with the penalty area.
6.12	Behind goal line – luminaire mounting zone	Luminaires positioned behind the goal and parallel to the penalty area should be mounted greater than 60° from the goal line .
6.13	Behind goal line – second linear row	An adequate lateral distance between the luminaire mounting position and the goal lines should be maintained in order to achieve the required vertical illuminance level around the perimeter of the pitch. In some cases, a second linear run of luminaires may be installed under a stadium roof canopy to assist in this area.
6.14	AFC pitch dimensions	Official AFC pitch size and penalty area dimensions

6 Diagrams of design guidelines

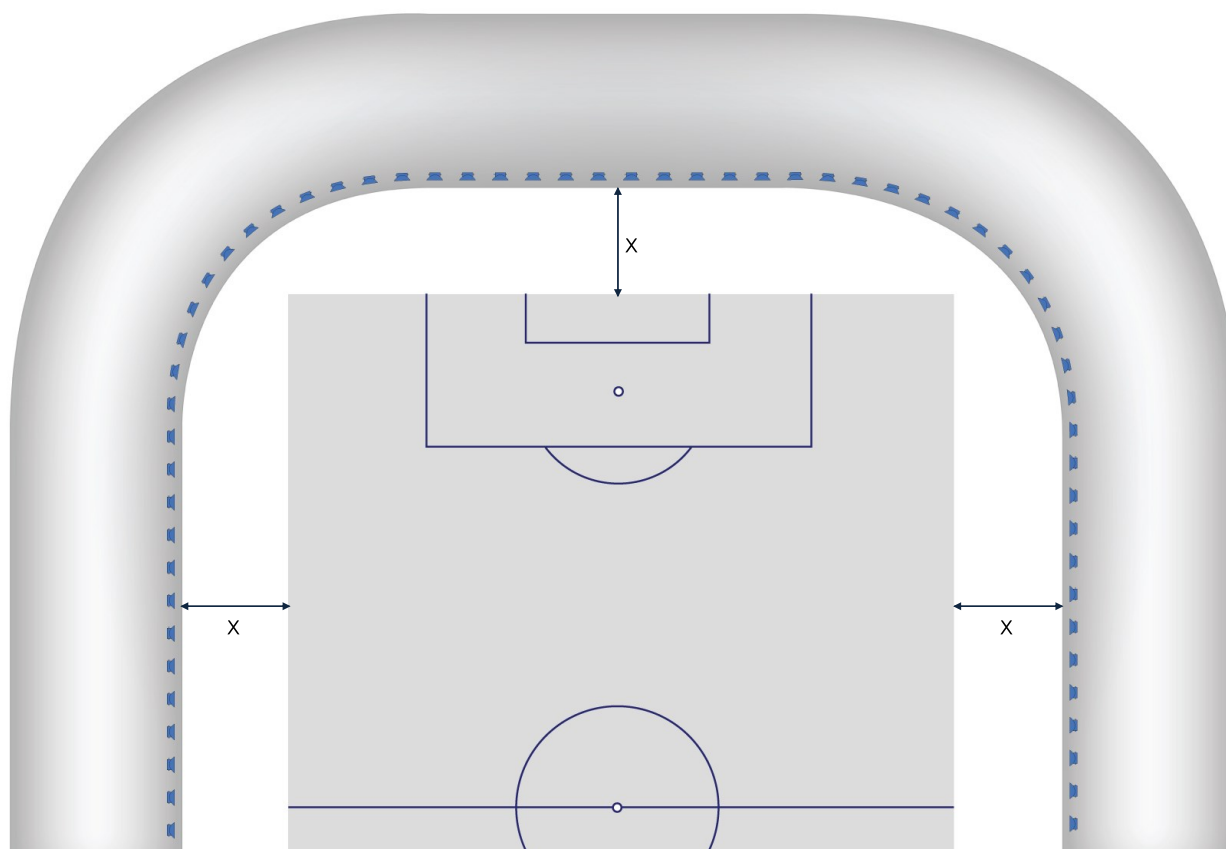
6.01 Corners—column/tower floodlight array



When pitch illuminance is provided by means of corner columns or towers with multiple luminaires in a group (as is generally seen in a headframe), the luminaires should not be mounted within 15° of either side of the goal line (see diagram above).

Large multiple arrays of luminaires provide greater levels of discomfort glare and should not, therefore, be positioned in these areas. A consecutive line of luminaires with more than two rows is considered, for this purpose, to be a 'large multiple array'.

6.02 Linear–roof rim lighting



Lateral distance guide	20° angle	27.5° angle
Luminaire height	Lateral distance (x)	Lateral distance (x)
16m	> 5.8m	> 8.3m
20m	> 7.3m	> 10.4m
24m	> 8.7m	> 12.5m
28m	> 10.2m	> 14.6m
32m	> 11.6m	> 16.7m

When the pitch illuminance is provided by means of a single linear run of luminaires around the stadium roof rim structure as seen in the diagram 6.02 the luminaires should be positioned with sufficient lateral distance to the pitch perimeter to ensure the required vertical illuminance levels and illuminance uniformity may be achieved.

As a general guide an angle of greater than 20° between the pitch perimeter and the luminaires should be maintained. The optimum angle to is 25° - 30° for the majority of stadiums. The required lateral distance should be evaluated in conjunction with the proposed luminaire mounting position. Insufficient lateral distance may cause poor illuminance uniformity and the angle of luminous flux towards the pitch perimeter will cause deep and dark shadows on player faces as seen in diagram 6.03.

If the stadium design or existing installation requires luminaires to be positioned within a lateral distance of less than 20° perpendicular to the perimeter of the pitch, or if the vertical illuminance requires improvement, a second linear run of luminaires may be required.

The focus position of each luminaire should adhere to the requirement to ensure that player discomfort glare is maintained at an acceptable level. Further guidance may be seen in sections 6.05. and 6.09.

6.03 Player face modelling

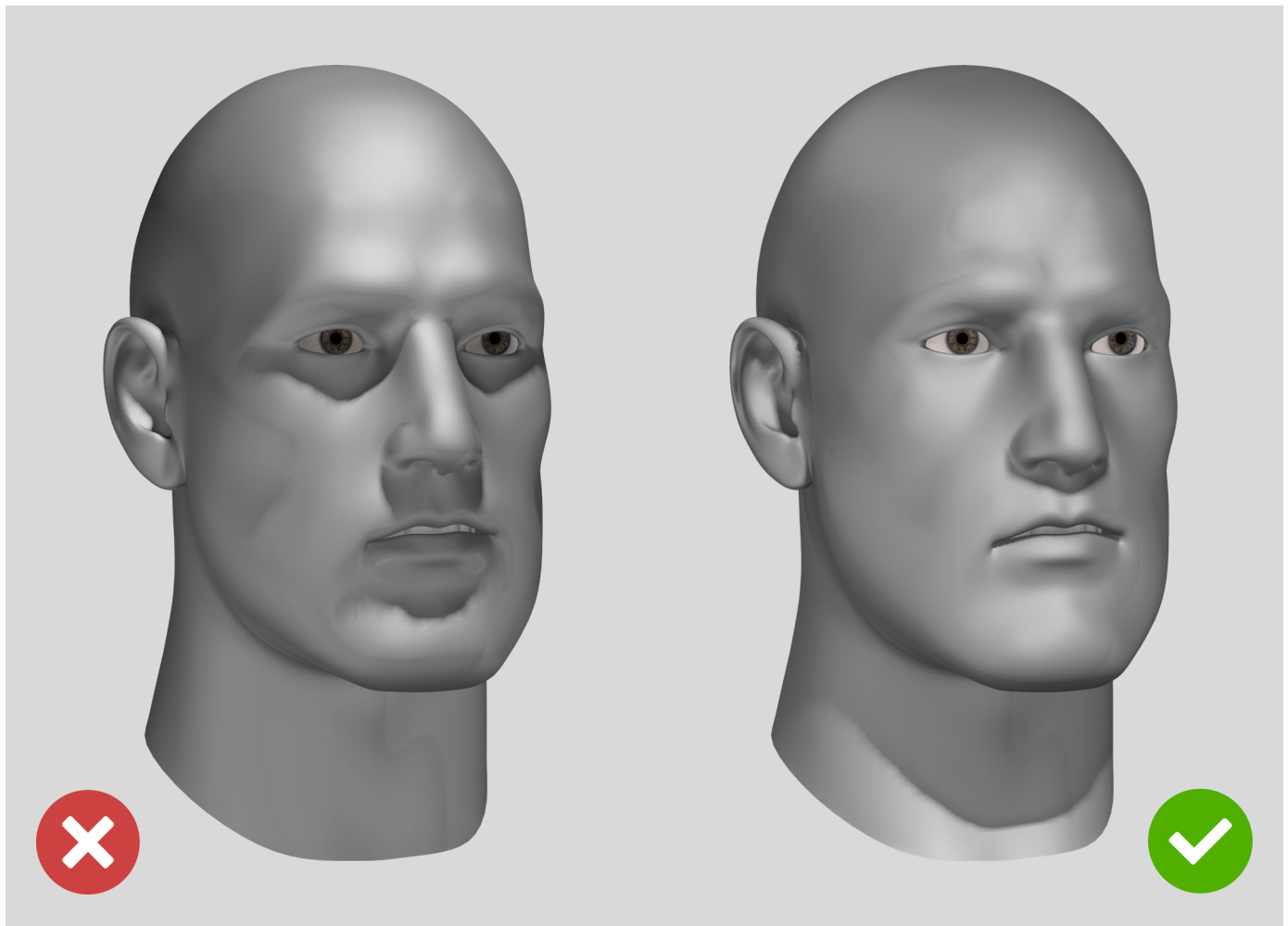


Figure 1
Example of poor face modelling

Figure 2
Example of good face modelling

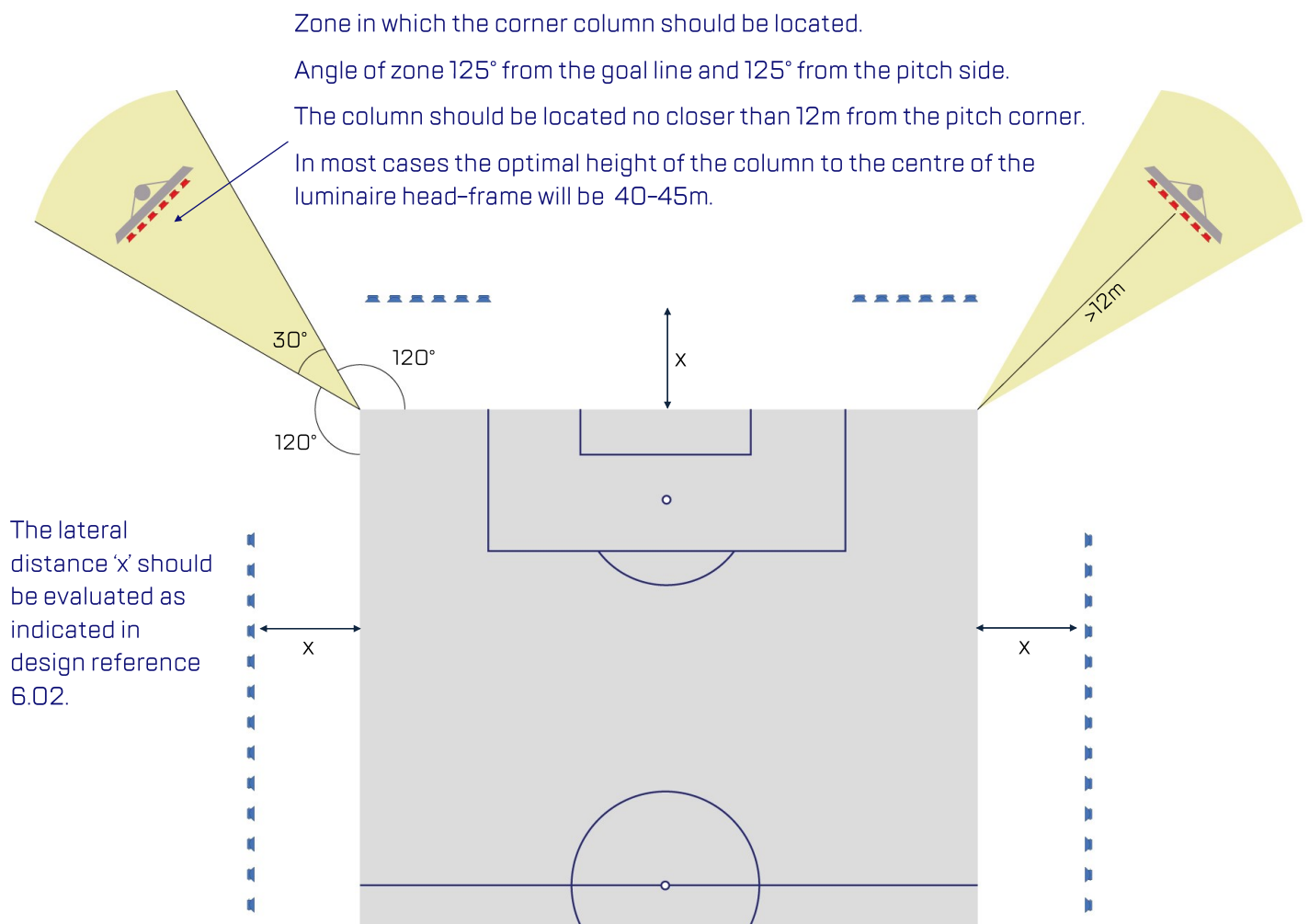
For high quality television production it is of fundamental importance that player faces are exposed correctly with good illuminance that produces player face modelling to allow facial character and expressions to be observed clearly.

During a football match the player position and orientation as well as viewpoint will continually change and therefore a football pitch is not expected to provide lighting for face modelling equivalent to that of a TV studio. However it is possible to provide a consistent level of good illuminance conditions to ensure player face modelling is of good quality. To do so it is essential that the luminous flux from the pitch illuminance system arrives at the pitch from the appropriate angle. If the incident light arrives from a steep angle the shadows cast upon the player faces (as shown in figure 1) are deep and produce dark eye and nose shadows.

When the incident light is delivered upon the face from the correct angle the illuminance conditions and resultant face modelling of the player face (as may be seen in figure 2) is good and beneficial for TV broadcasters and spectator/viewers.

It is considered necessary for luminaires to be positioned to provide a minimum angle to the perpendicular of the pitch perimeter of 20° (the optimum angle is 25°-30°) to ensure that player face modelling is of a good standard.

6.04 Column positions



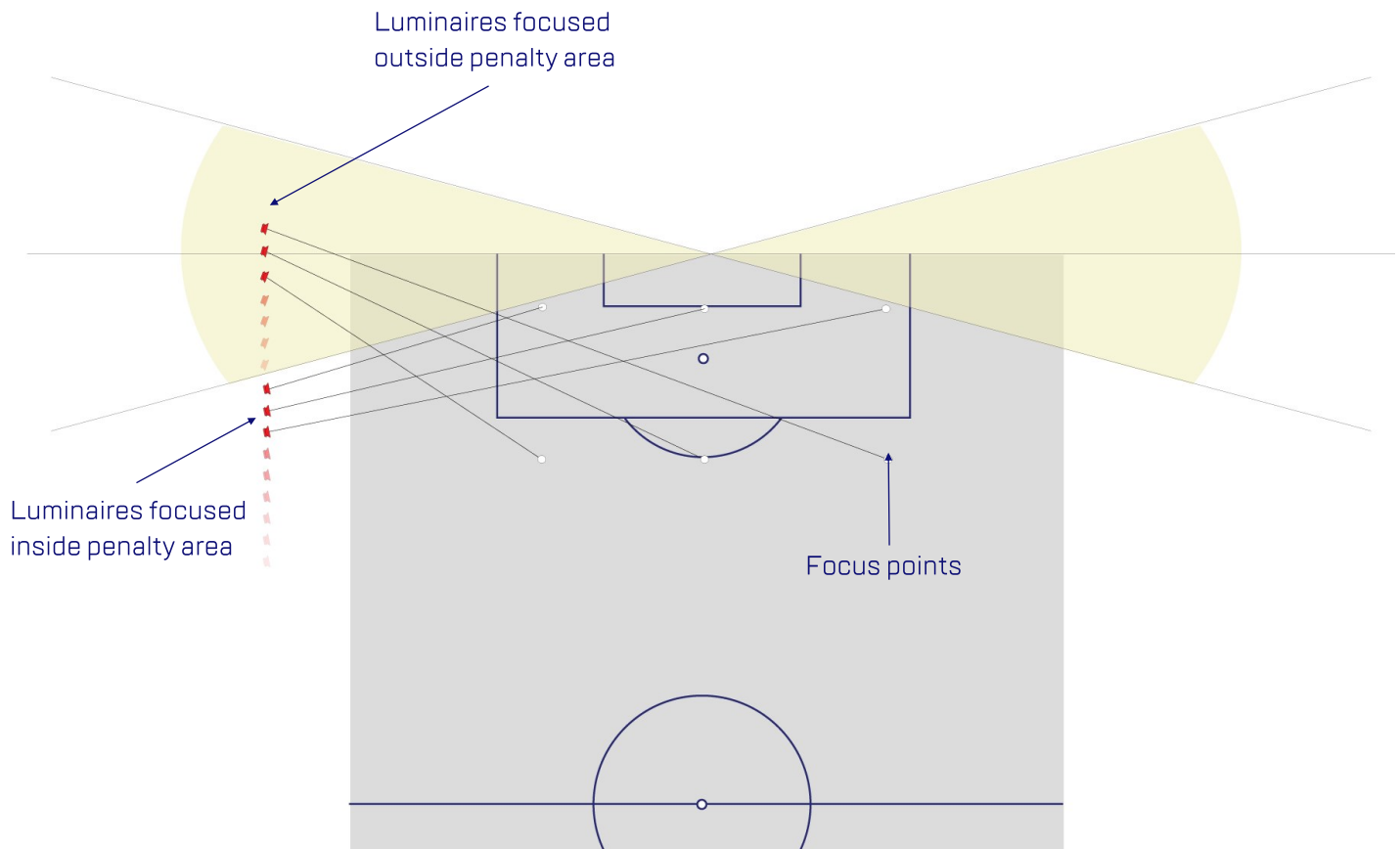
A corner column should be positioned in the zone as indicated in the diagram above. The zone is the area created by making an angle of 120° from the goal line and 120° from the pitch side. The column should be located no closer than 12m from the pitch corner. In most cases the optimal height of the column to the centre of the luminaire head-frame will be about 40m.

The corner column position may be compromised by land space, structural objects or foundation restrictions. However where possible the following guidance should be implemented to ensure the luminaires are positioned correctly to provide effective illuminance conditions.

Additional luminaires may be used in pitch illuminance systems that use corner columns. In the diagram above (diagram 6.04) it is seen that lateral arrays of luminaires attached to the stadium roof structure have been used and are shown in blue. The lateral distance marked (x) should be evaluated as indicated in 6.02.

In stadiums it is essential that players are not hindered by discomfort glare cause by the pitch illuminance system. At every stage of the design process the impact of discomfort glare should be considered.

6.05 Corners – linear floodlight array



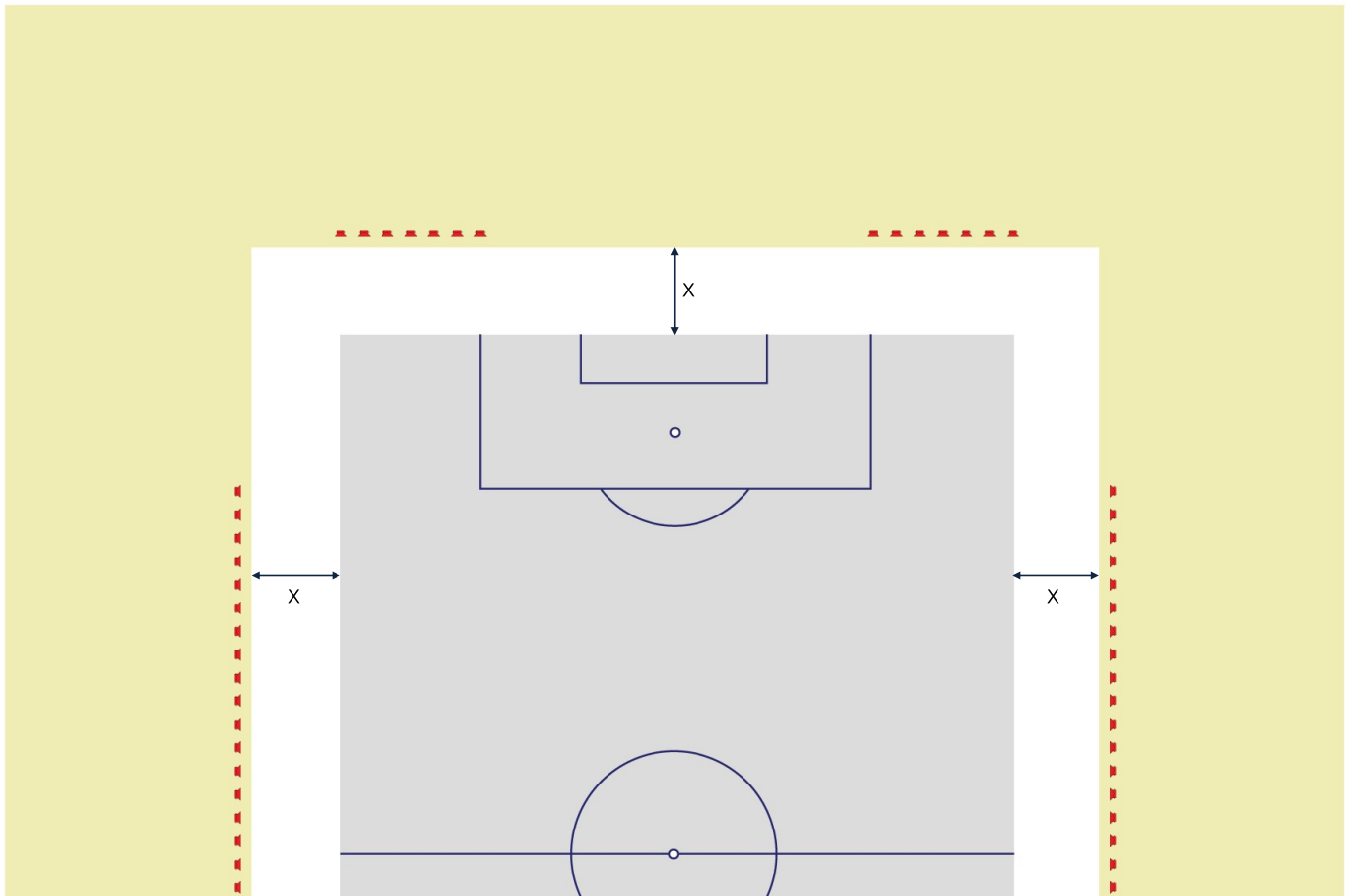
Additional consideration should be applied to ensure that players in the penalty area are not affected by discomfort glare. A linear run of luminaires is considered to be within an acceptable level if the luminaires' focus points are such that players can stand in the penalty area and look towards the corners without hindrance.

Luminaires mounted within 15° of the goal line should be focused away from the penalty box, as indicated in the diagram above.

Multiple arrays of luminaires should not be positioned within 15° of either side of the goal line.

A linear array of luminaires used for this purpose should not comprise more than two rows.

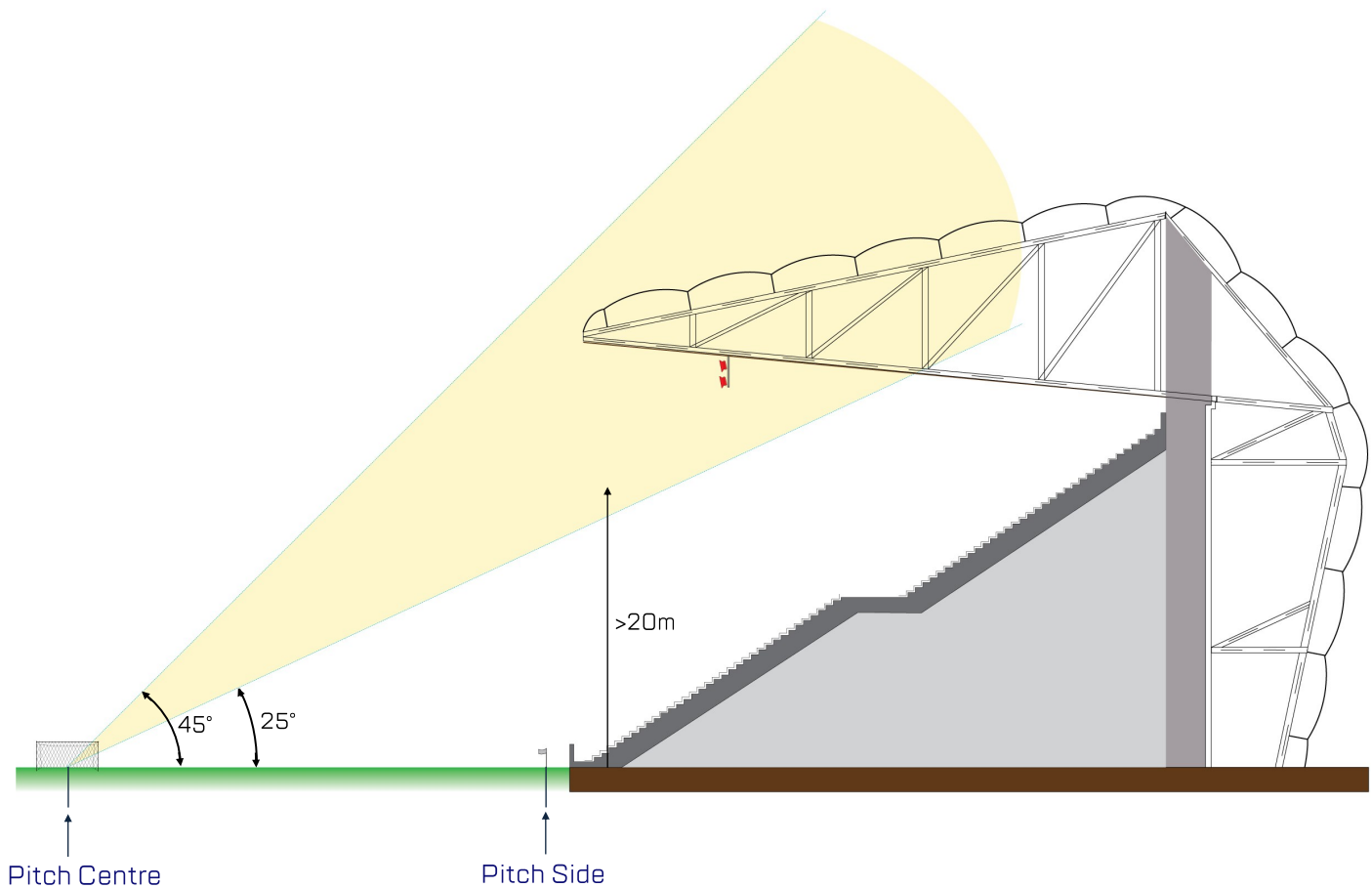
6.06 Pitch perimeter – lateral distance



In order to achieve the required vertical illuminance around the perimeter of the pitch, the luminaires should have a mounting position with a minimum lateral distance from the pitch perimeter of greater than the value of (x) . Guidance to evaluate the lateral distance (x) is provided in section 6.02.

When possible it is considered good practice to arrange and locate the luminaires in areas that are not in zones that are assessed to be of critical importance to ensure that players maintain the maximum visual clarity and comfort when either attacking or defending in the goal area. When this is not possible the guidance provided in this guide with reference to luminaires positions and focus points and the impact upon discomfort glare should be carefully applied.

6.07 Pitch perimeter – luminaire mounting zone



As a general guide, the luminaires should not be mounted less than 25° or more than 45° above the centre of the pitch.

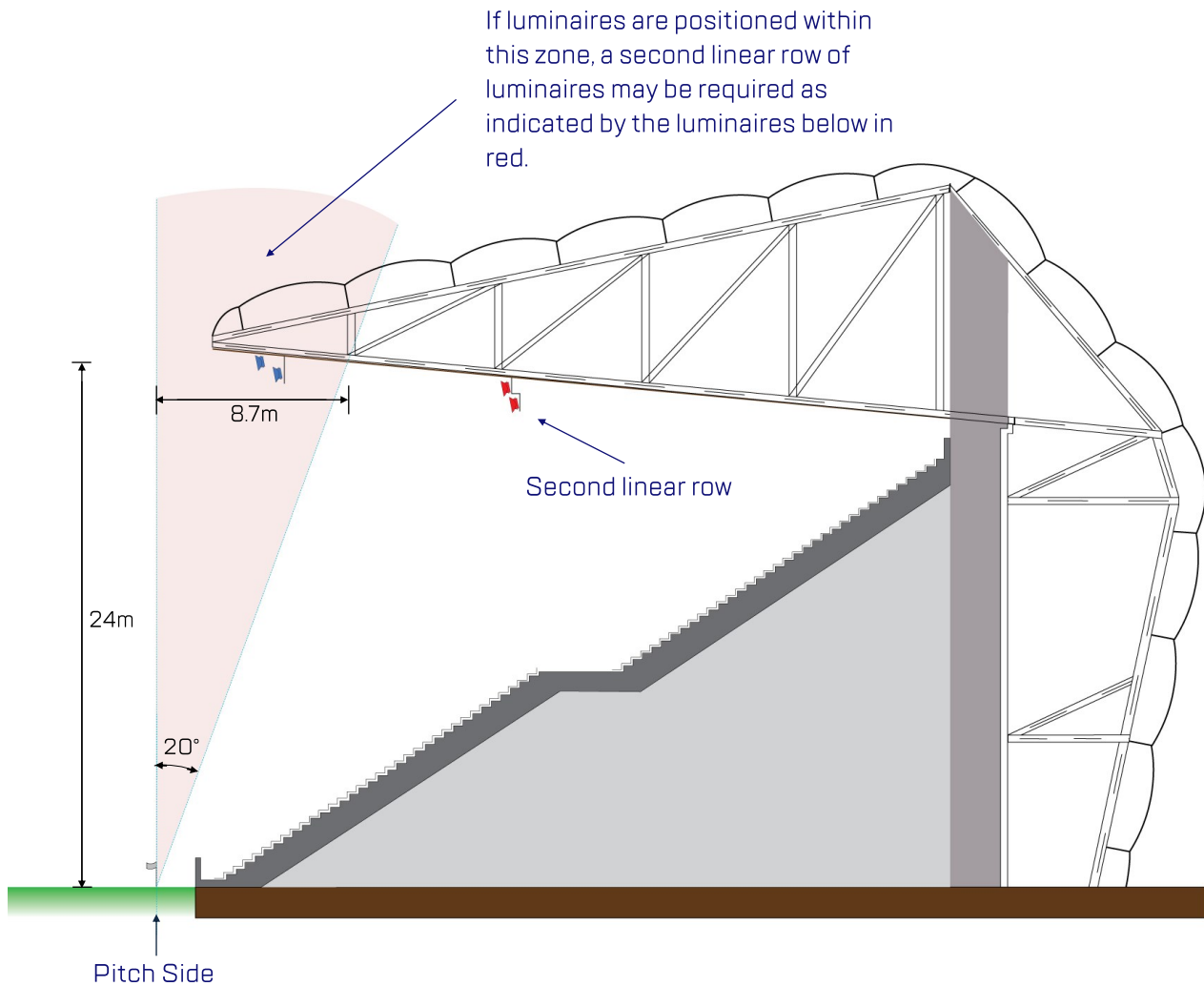
This will generally be a good guide when designing illuminance conditions to comply with the AFC's guidelines.

If possible, luminaires should be mounted at least 20m above the surface of the pitch. If this is not possible, it is important to develop a design solution that considers the implications of the reduced height and takes into account any effects of player discomfort glare.

Player discomfort glare must be rated at below the level of 50. The angle of a floodlight's tilt should be limited to 70° for HID luminaires and 60° for Flat Panel LED luminaires as indicated in the diagram in Section 6.09. However the structural design of some stadiums may make this not possible. The level of discomfort glare should be evaluated and determined by during the design process and records of the process should be maintained for reference.

The use of luminaires with an asymmetric light distribution may be used along the pitch sides in order to produce good illuminance levels and uniformity along the adjacent pitch perimeter. In this application the asymmetric luminaires are often seen to assist in reducing the levels of glare experienced by players and officials.

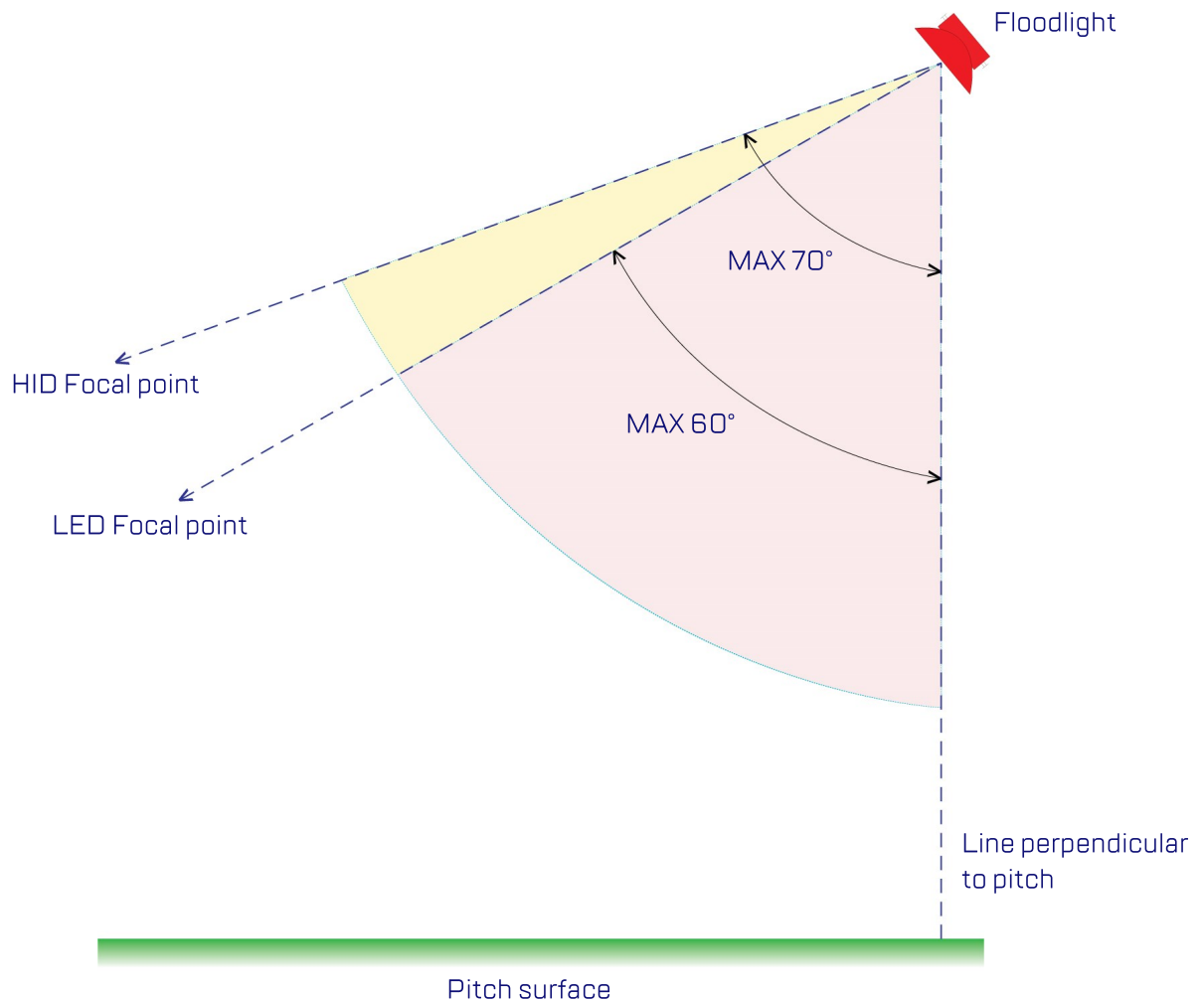
6.08 Pitch perimeter – second linear row



If the stadium design or existing installation requires luminaires to be positioned within a lateral distance of less than 20° of the perimeter of the pitch, or if the vertical illuminance requires improvement, a second linear run of luminaires may be required to be used to achieve the required vertical illuminance around the perimeter of the pitch. The optimum angle for a second linear row of luminaires is generally 25° - 30° for the majority of stadiums. However the optimum position of the luminaires should be evaluated in conjunction with the existing installation or the whole design proposal.

In the diagram above it may be seen that with a luminaire height of 24m it is necessary to have a lateral distance of no less than 8.7m from the pitch perimeter.

6.09 Luminaires' focus point angle

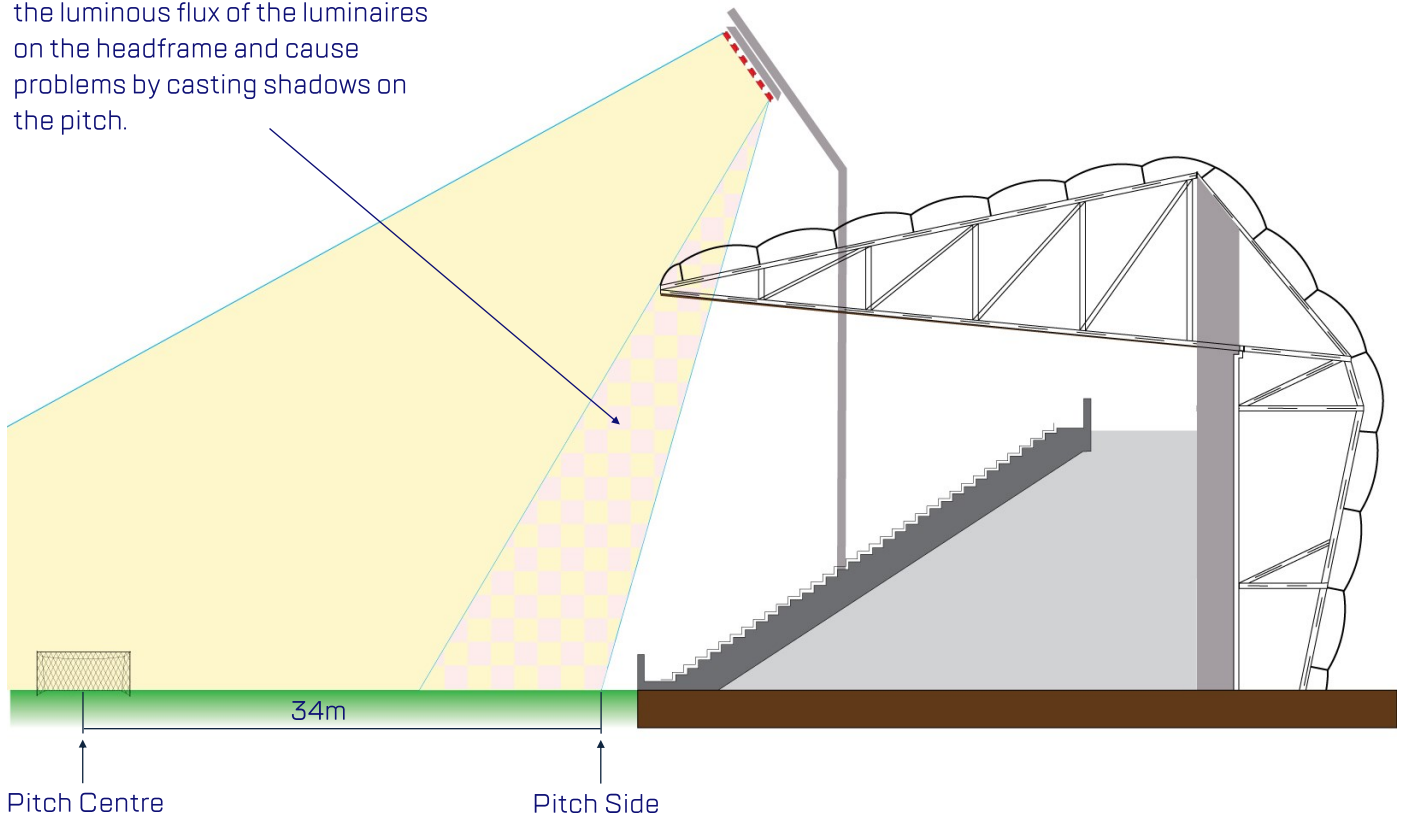


In order to avoid discomfort glare being experienced by players and officials, a general rule during the design process is to ensure that luminaires' focus point angle is no more than 70° from the line perpendicular to the pitch, as in the diagram above. This is a good general guideline, but it will not always be possible owing to the constraints of the stadium's design.

The above guidance is particularly relevant to single point source illuminance systems, as generally seen with high-intensity discharge lamps. However, it may be necessary to re-evaluate this guidance when using LED luminaires, which will generally have large arrays of LEDs producing direct point source luminous flux. It should be noted that with 'Flat Panel LED' luminaires the angle of the floodlight focus point should be carefully assessed to ensure the level of discomfort glare on the football pitch is maintained to an acceptable level. When using 'Flat Panel LED' luminaires and depending upon the specifications of the luminaire it is recommended that the maximum angle of the focus point perpendicular to the pitch should be no greater than 60° .

6.10 Pitch sides – luminaire mounting position

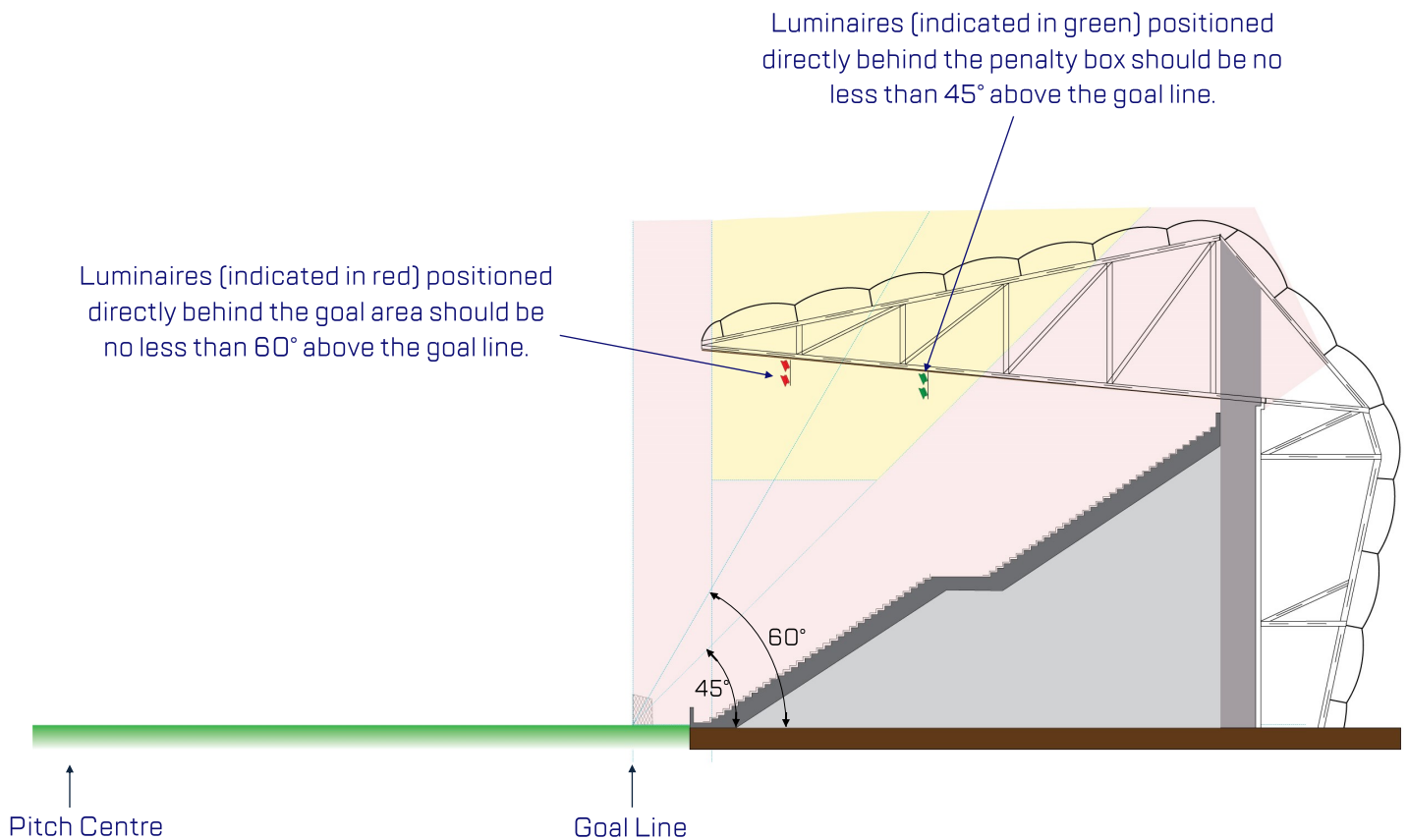
The stadium roof structure in the diagram may be seen to obstruct the luminous flux of the luminaires on the headframe and cause problems by casting shadows on the pitch.



Stadium structures should not impede the luminous flux of the pitch illuminance system and cause shadows to be cast upon the surface of the pitch. Care should be taken to ensure that the luminous flux projection lines to the pitch surface are completely clear.

In the diagram above it may be seen that the luminous flux of the corner column head-frame is obstructed by the stadium roof. In such cases it is necessary to focus the luminaires on the head-frame away from the stadium roof structure and provide additional illuminance by means of installing luminaires under the stadium roof structure.

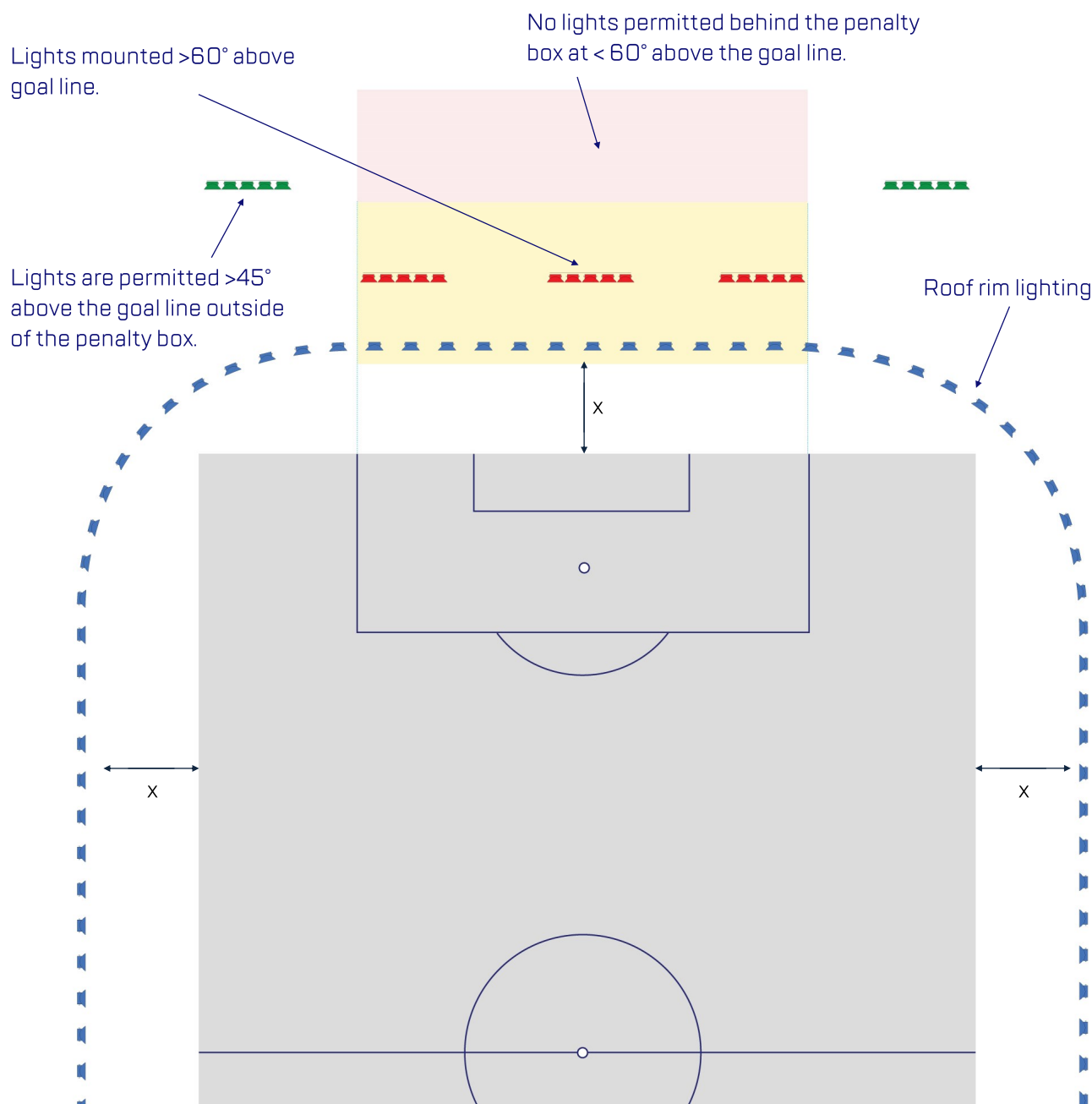
6.11 Behind penalty area – luminaire mounting zone



In order to avoid discomfort glare being experienced by attacking players looking towards the goal, additional provision is made by increasing the installation angle of luminaires directly behind the penalty area (as shown in the diagram above). Luminaires positioned directly behind the goal area should be no less than 60° above the goal line.

Additional guidance is provided in design guideline ref: 6.12.

6.12 Behind goal line – luminaire mounting zone



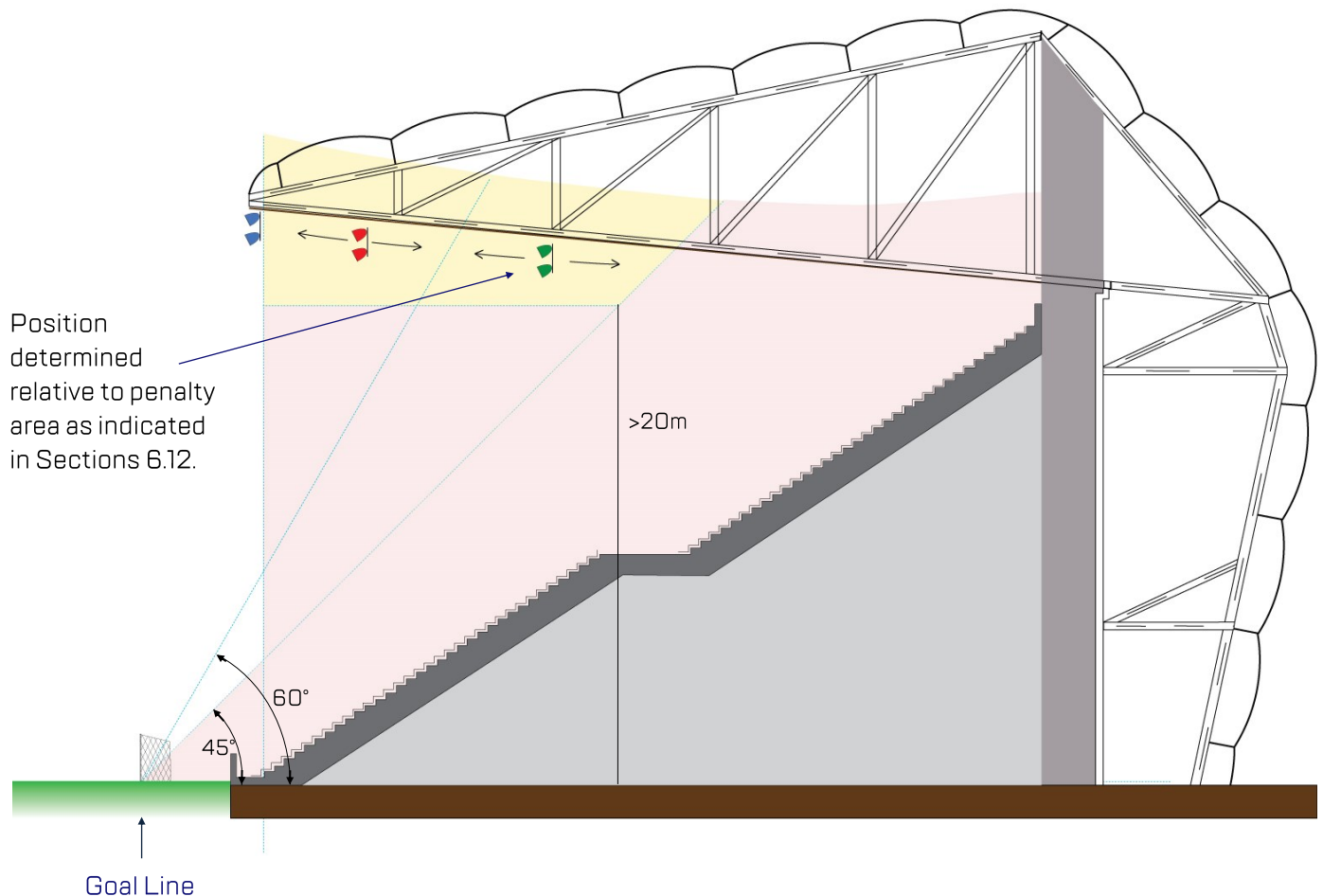
Luminaires positioned behind the goal and parallel to the penalty box as indicated in Section 6.11 should be mounted more than 60° from the goal line when in line with the penalty area, as indicated in the diagram above. If a pitch illuminance system using a continuous 'rim' lighting method is to be used it is necessary to calculate the required lateral distance as indicated by 'x'. Further guidance may be provided in 6.02 on page 19.

Luminaires that are not in line with the penalty box may be mounted at an angle of more than 45° from the goal line.

If only a single linear line of luminaires is used as indicated by the blue luminaires, the minimum lateral distance from the goal line (as indicated in 'x') may be calculated by ensuring that the luminaires are positioned at an angle of greater than 20° perpendicular to the pitch perimeter.

Further guidance may be obtained by viewing AFC reference 6.11.

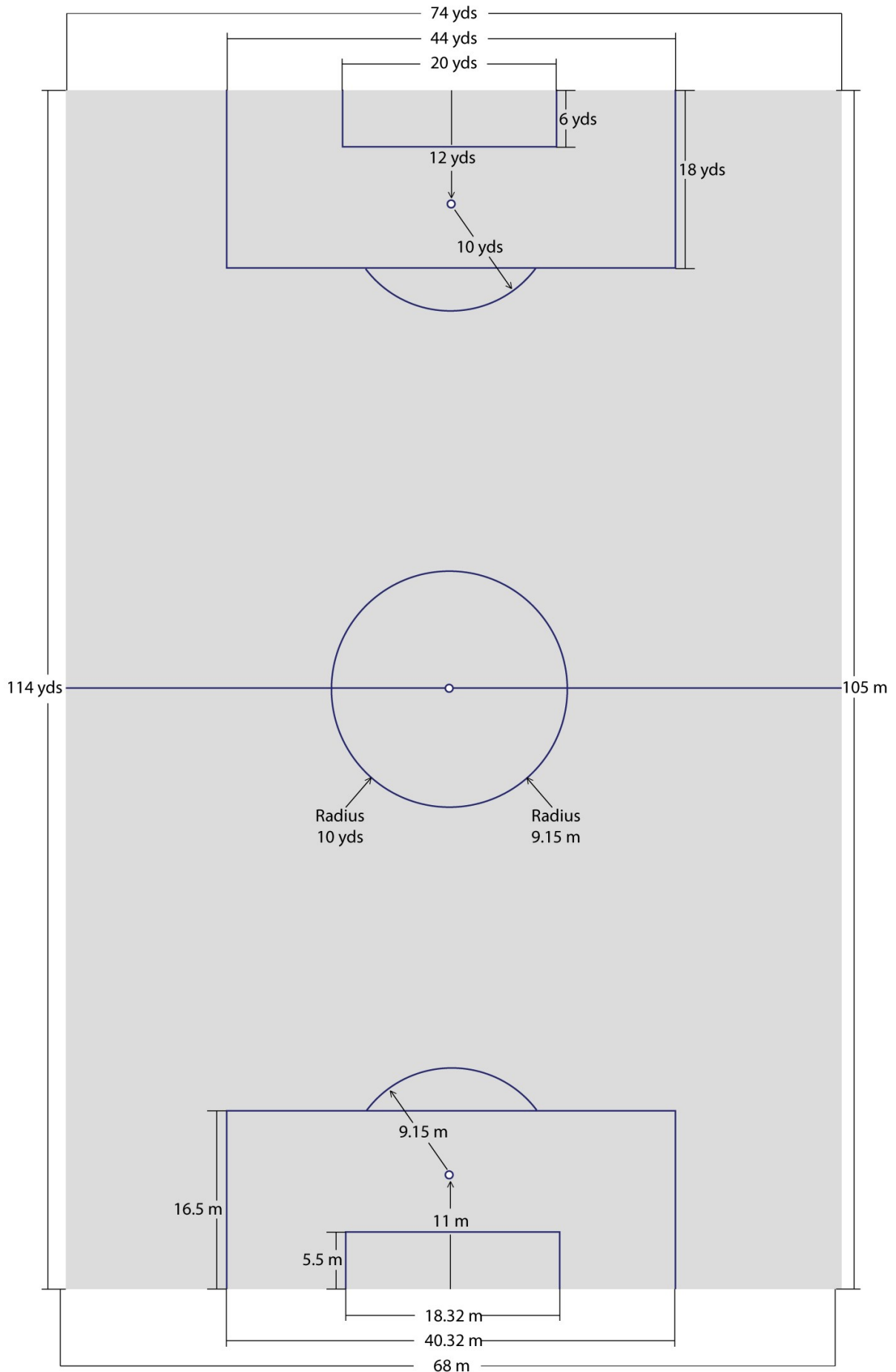
6.13 Behind goal line – second linear row



If the stadium design or existing installation requires luminaires to be positioned within a lateral distance of 20° from the goal line (as indicated by the blue luminaires in the diagram above) or if the vertical illuminance requires improvement, a second linear run of luminaires should be used to achieve the required vertical illuminance along the goal line and within the penalty area. Luminaires positioned directly behind the penalty area should be mounted at an angle of more than 60° (as indicated by the red luminaires in the diagram above). Outside the area parallel to the penalty area, luminaires may be mounted at an angle of more than 45° (as indicated by the green luminaires).

Where possible, all luminaires behind the goal line should be a minimum of 20m above the pitch surface. If this is not possible, it is important to develop a design solution that considers the implications of the reduced height and takes it into account.

6.14 AFC pitch dimensions



7 Uniformity of illuminance

A critical element of a pitch illuminance system is the uniformity of illuminance across the whole pitch in all of AFC's reference planes.

The uniformity of illuminance can be defined as how evenly light is distributed over a given reference plane.

The uniformity of illuminance is expressed using two illuminance ratios: U1 and U2.

U1 The total illuminance range, from minimum to maximum, that a person or camera will be exposed to. The U1 value will contribute to the visual performance experience.

U2 The difference between a person's normal adapted exposure and the lowest illuminance level on the given plane. The U2 value will contribute to the visual comfort experience.

Horizontal uniformity of illuminance

U1h A measure of horizontal uniformity of illuminance – the ratio of minimum horizontal illuminance to maximum horizontal illuminance across all 96 reference points.

U2h A measure of horizontal uniformity of illuminance – the ratio of minimum horizontal illuminance to average horizontal illuminance across all 96 reference points.

Vertical uniformity of illuminance

U1v-(angle°) A measure of vertical uniformity of illuminance on the specified reference plane – the ratio of minimum vertical illuminance to maximum vertical illuminance across all 96 reference points.

U2v-(angle°) A measure of vertical uniformity of illuminance on the specified reference plane – the ratio of minimum vertical illuminance to average vertical illuminance across all 96 reference points.

It should be noted that AFC's requirements are the minimum standards for the various illuminance levels. Experience shows that uniformity values that are calculated during the design process are a good guide, however they are often higher than the values measured after the illuminance system has actually been installed. AFC recommends that the illuminance uniformity values that are calculated during the design process are higher than the minimum requirements to allow for potential declines when real values are measured.

8 Glare

8.01 Glare

Glare is the sensation produced by luminance within the field of vision that is so much stronger than the eyes are used to that it causes annoyance, discomfort and/or impaired visibility and visual performance.

8.02 Discomfort glare

Discomfort glare is caused by direct glare from luminaires which are too bright, inadequately shielded or too large in size. It is also caused by reflected glare from specular surfaces lit by other sources (which in a stadium may be the sun).

When the eye has got used to the dark, it is particularly susceptible to the impairment and depression of central vision when a bright light enters the field of vision.

8.03 Evaluation of glare

The method of determining the glare effect of a light source or a group of light sources is complicated. Glare will certainly increase as the number of light (or glare) sources increases and the size of the light (or glare) source increases. The size, luminance and position of light sources will all affect the level of glare that is experienced.

Glare is a subjective factor, for which a practical evaluation system has been devised for outdoor sports applications by the International Commission on Illumination (CIE) on the basis of extensive field tests. The CIE 112-1994 Glare Evaluation System for Use within Outdoor and Area Lighting – defines a glare rating (GR) with an assessment scale of 10 to 90. The lower the glare rating, the better the glare situation.

The validity of this system is restricted to viewing directions below eye level, and it is mainly used for predicting the degree of glare. During the lighting design phase, a glare assessment based on CIE 112-1994 should be carried out. Calculations should be made for observer positions using the grid points on page 60. Assessments should be made every 15°, starting from 0° or 180°, over a total of 360°. Observer positions should be 1.75m above the pitch surface.

The maximum glare rating and the corresponding direction should be displayed for each observer position.

9 Pitch Illuminance Switch Mode (PISM)

The pitch illuminance system should be pre-programmed with various different modes. The number of modes may vary from stadium to stadium. The list below provides a few examples:

- Mode 1: Full match mode (FMM)
- Mode 2: Match continuity mode (MCM)
- Mode 3: Training mode (TM)
- Mode 4: Maintenance mode (MM)

Pitch illuminance systems that use LED luminaires may have the facility to select the desired luminous intensity as a percentage and the levels may be stored and then programmed into the lighting switch/control system.

9.01 Full match mode

This involves the pitch illuminance system operating in a manner that satisfies the requirements specified for the relevant AFC illuminance level.

9.02 Match continuity mode

This mode should automatically be activated when the primary power supply fails. The pitch illuminance system should switch to the MCM and perform in accordance with (or above) the minimum standards specified for the relevant AFC level.

In terms of the uniformity of illuminance, U1 must be greater than 0.5 on the horizontal plane and 0.4 on the vertical plane. It is not considered necessary to evaluate U2 for the MCM.

The MCM is essential and should be part of the design process. In order for this mode to operate successfully, the power supply facilities and options available must be carefully considered during the design process.

9.03 Training mode

This involves the pitch illuminance system operating with an average horizontal illuminance of 500 lux.

9.04 Maintenance mode

This involves the pitch illuminance system operating with an average horizontal illuminance of 250 lux.

10 Flicker Factor (FF)

10.01 Flicker factor guidance

During broadcasts, we can often see that some illuminance systems cause the picture to flicker during slow-motion replays. The flicker is distracting and impairs the viewer's experience, so it should be eliminated where possible. The circumstances that produce the flicker will vary depending on the modulation of the flicker, the alternating voltage frequency and the camera frame rate.

The term 'flicker factor' refers to the amount of modulation of luminance on a given plane during a complete cycle. It denotes the relationship between the maximum luminance value and the minimum luminance value over a full cycle and is expressed as a percentage.

Flicker: A rapid and repeated change in the brightness of light over time.

Modulation: A measure of light variation during periodic oscillations.

The flicker factor is calculated using the following formula:

$$FF = \frac{1}{2} \times \frac{E_{max} - E_{min}}{E_{average}} \times 100\%$$

or

$$FF = \frac{E_{max} - E_{min}}{E_{max} + E_{min}} \times 100\%$$

Where:

E represents the illuminance level during a complete cycle.

In all but the most extreme circumstances, it is possible to eliminate the flicker that is seen during slow-motion replays. The table on the next page provides a general indication of the flicker factor values produced by various illuminance systems.

A flicker factor of less than 5% will not generally cause problems for slow-motion replays of up to 300 frames per second. While the number of frames per second will vary depending on the technology used, an illuminance system with a flicker factor of less than 5% will eliminate perceived flicker for most technology used within the sports television industry.

Illuminance flicker is commonly eliminated by installing electronic control ballasts or square wave form ballasts in the illuminance system. This technology can generally be added to existing installations, as well as being available for new installations.

The flicker that is observed with very high numbers of frames per second can also be eliminated using computer processing. However, this method has other limitations.

The level of flicker that is considered acceptable is indicated in the AFC illuminance category tables in Section 4.

10.02 Flicker factor reference table

Type of illuminance system	FF value (guide only)
Natural daylight	0%
LED luminaires (flicker dependent on the type of LED power supply used)	< 3%
Discharge lamps with 100% electronic ballasts	< 4%
Discharge lamps with magnetic ballasts spread uniformly across three-phase power supply	8–20%
Discharge lamps with magnetic ballasts on single-phase power supply	30–50%

10.03 Flicker factor with three-phase power supply

Pitch illuminance systems that use standard-frequency ballasts with typical sine wave luminance modulation characteristics will produce a wide range of flicker factor test results. This is due to the variation at test points in the overlapping of luminous flux from different luminaires at different angles. With careful planning, it may be possible to design the luminaire focus points for all areas and planes of the pitch to receive overlapping luminous flux from luminaires at different angles. This may produce substantial improvements and may meet AFC’s requirements for level 2 and level 3 stadiums.

Although the above method may produce substantial improvements, it will not meet the requirements for AFC Lighting Category 1 stadiums without additional solutions to reduce the modulation of luminance. A mixture of electronic or square wave ballasts with standard-frequency sine wave ballasts may produce a flicker factor below 5%. This system will be more successful in larger installations where a greater number of luminaires are available to provide overlapping luminous flux coming from different angles.

A pitch illuminance system that involves overlapping luminous flux coming from different angles should use a greater number of flicker factor test points to ensure that the flicker factor values are consistent in all areas. It is recommended that 24 test points are used.

Measures used to reduce the flicker factor should not impinge upon the uniformity of illuminance on any plane.

10.04 Flicker factor testing

It is possible to measure the flicker factor at a specific stadium to provide a precise evaluation. The assessment should be carried out by a competent technician with a suitable meter. That meter should be recalibrated on an annual basis.

The flicker factor test should be conducted as indicated.

10.05 12-point flicker factor test

At each of the six positions indicated in Section 10.8, a vertical flicker factor reading should be taken at a height of 1m on the 90° and 270° planes.

The 12-point average is calculated by dividing the sum of those 12 values by 12.

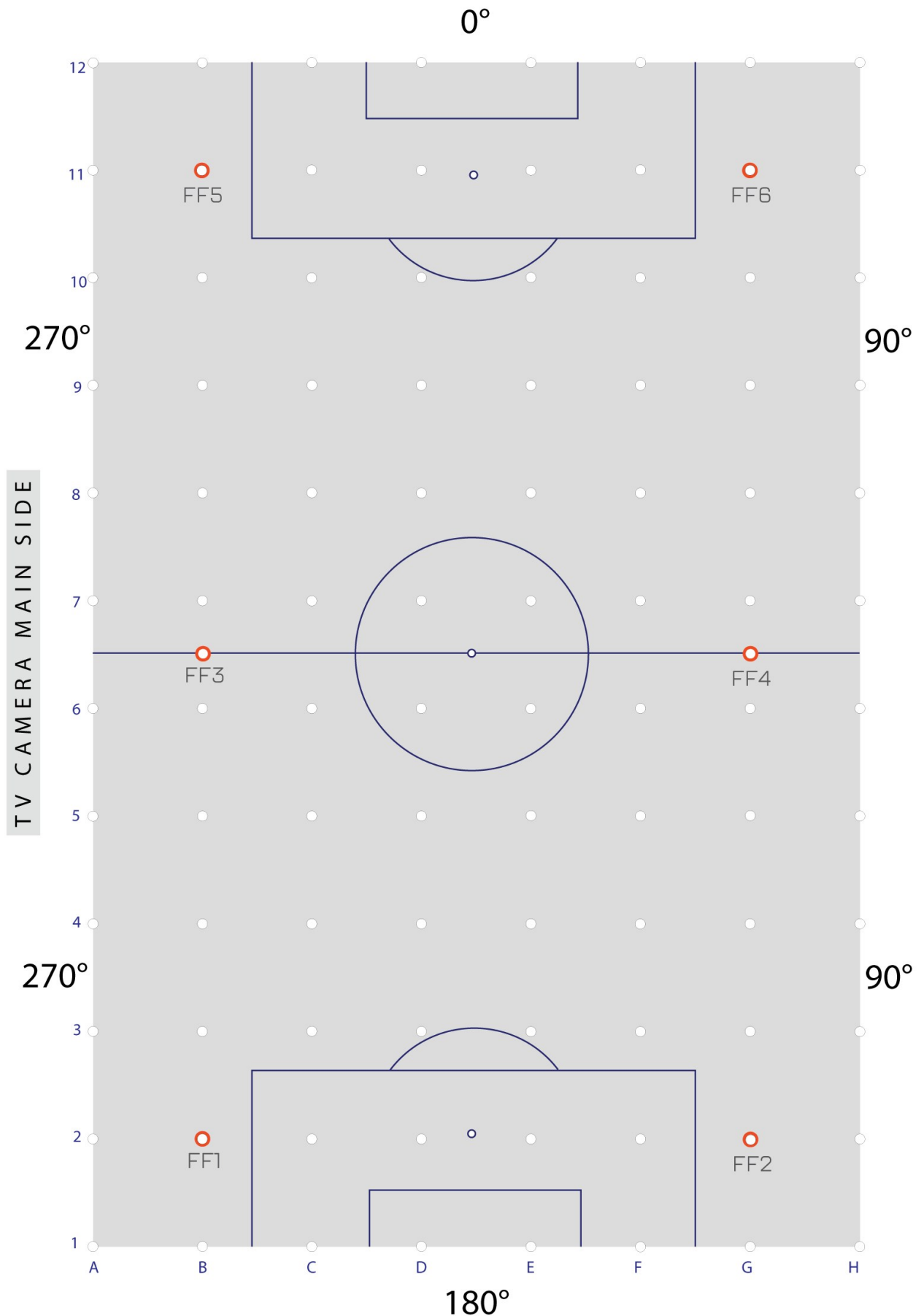
The maximum flicker factor value is the highest measured value of the 12 points.

The maximum permitted flicker factor is listed below for each AFC level.

AFC Level 1		Flicker Factor
12 -point average		< 5%
Maximum value		< 5%
AFC Level 2		
12 -point average		< 5%
Maximum value		< 5%
AFC Level 3		
12 -point average		< 10%
Maximum value		< 15%
AFC Level 4		
12 -point average		< 12%
Maximum value		< 18%
AFC Level 5		
12 -point average		< 18%
Maximum value		< 25%

10.06 Flicker factor test reference points – 12-point high-frequency test

The maximum flicker factor value is the highest measured single value at any given test point.

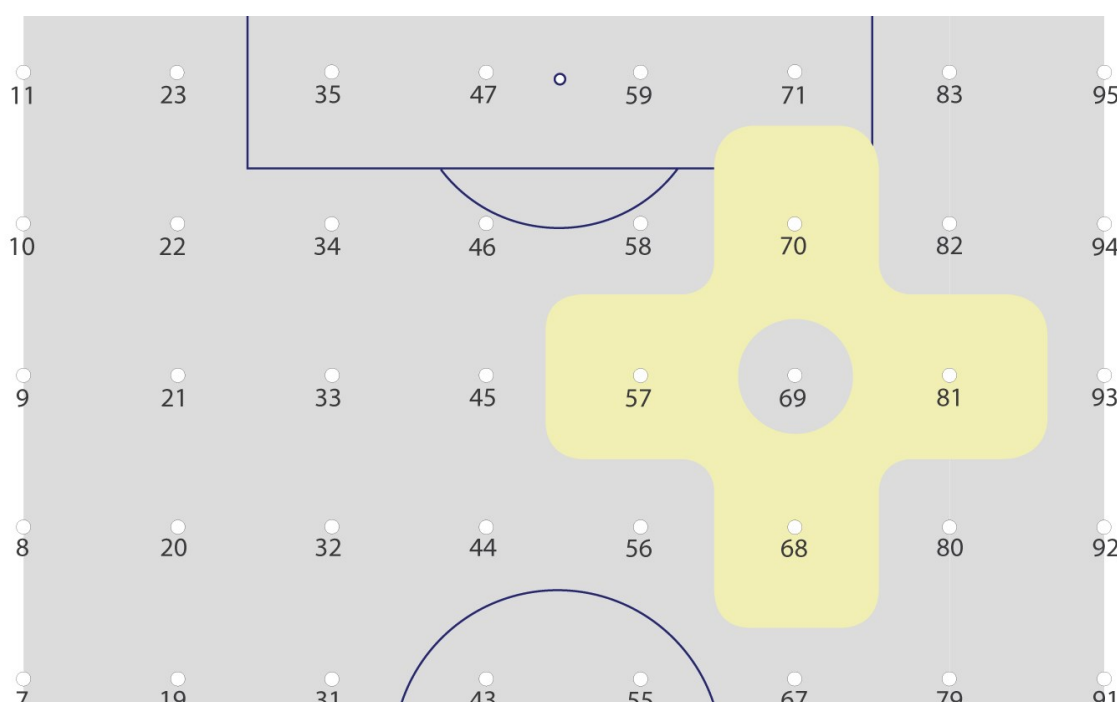


11 Minimum adjacent uniformity ratio (MAUR)

Any rapid change in the illuminance level on a given plane will cause camera exposure inconsistencies. During a fast-moving football match, it is unrealistic to expect the camera settings to be changed successfully on a consistent basis when the camera and the subject are both moving rapidly. The MAUR is used to ensure greater consistency in terms of camera exposure and thus greater freedom for the camera operator to provide dynamic pictures. The difference between the illuminance values of any two adjacent points on any given plane in any direction should be no greater than the permitted level stipulated in the tables in Section 4. That requirement takes the form of a minimum permissible ratio between the two points.

11.01 MAUR on the horizontal plane

The diagram below shows the secondary reference points that are considered in relation to a primary reference point. In this case, the primary reference point is 69, and the secondary reference points are 57, 68, 70 and 81.



AFC Category 1 stadium – MAUR evaluation

Reference point 69 on horizontal plane

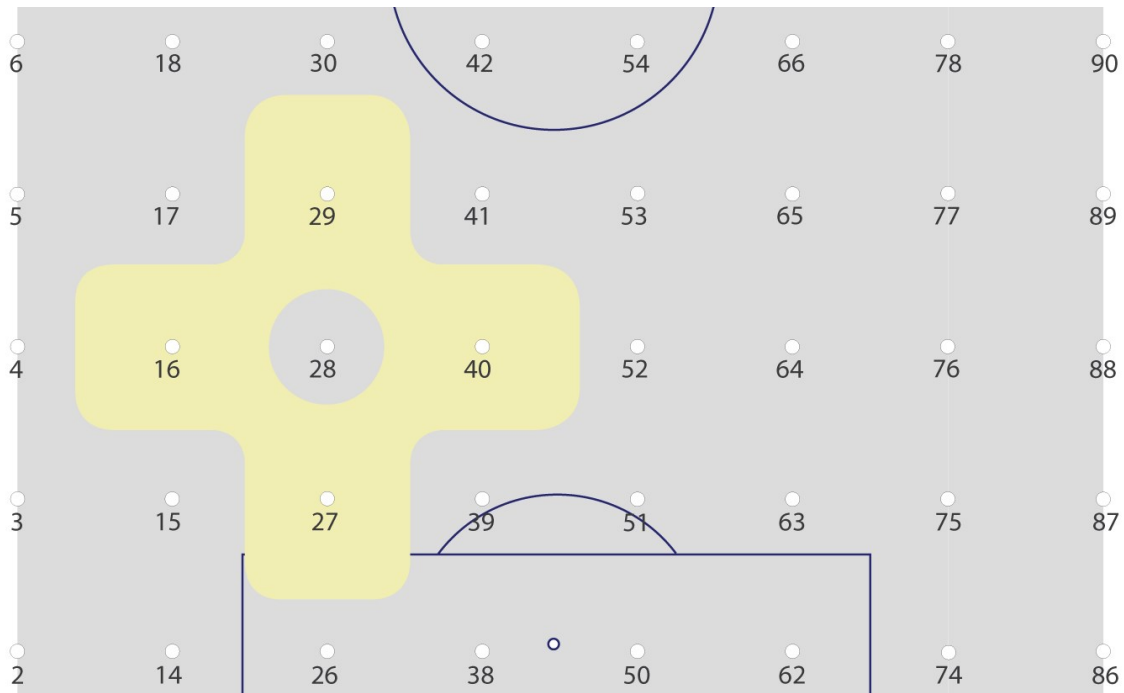
Reference point 69 – $E_h = 2,325$ lux

MAUR > 0.60

The illuminance value at the secondary reference points 57, 68, 70 and 81 on the horizontal plane must be greater than $2,325 \times 0.60 = 1,395$ lux.

11.02 MAUR on the vertical plane

The MAUR requirements are the same for all five planes. Each plane should be considered separately. In the example below, reference point 28 is considered on the vertical plane for a AFC Lighting category 3 stadium.



AFC Category 3 stadium – MAUR evaluation

Reference point 28 on the 270° vertical plane

Reference point 28 – Ev-270° = 712 lux

MAUR > 0.50

The illuminance value at the secondary reference points 16, 27, 29 and 40 on the 270° vertical plane must be greater than $712 \times 0.50 = 356 \text{ lux}$.

12 Colour Temperature

‘Colour temperature’ describes the feeling or appearance of how warm (red) or cool (blue) a certain type of illumination appears to be. It is measured in kelvins (K).

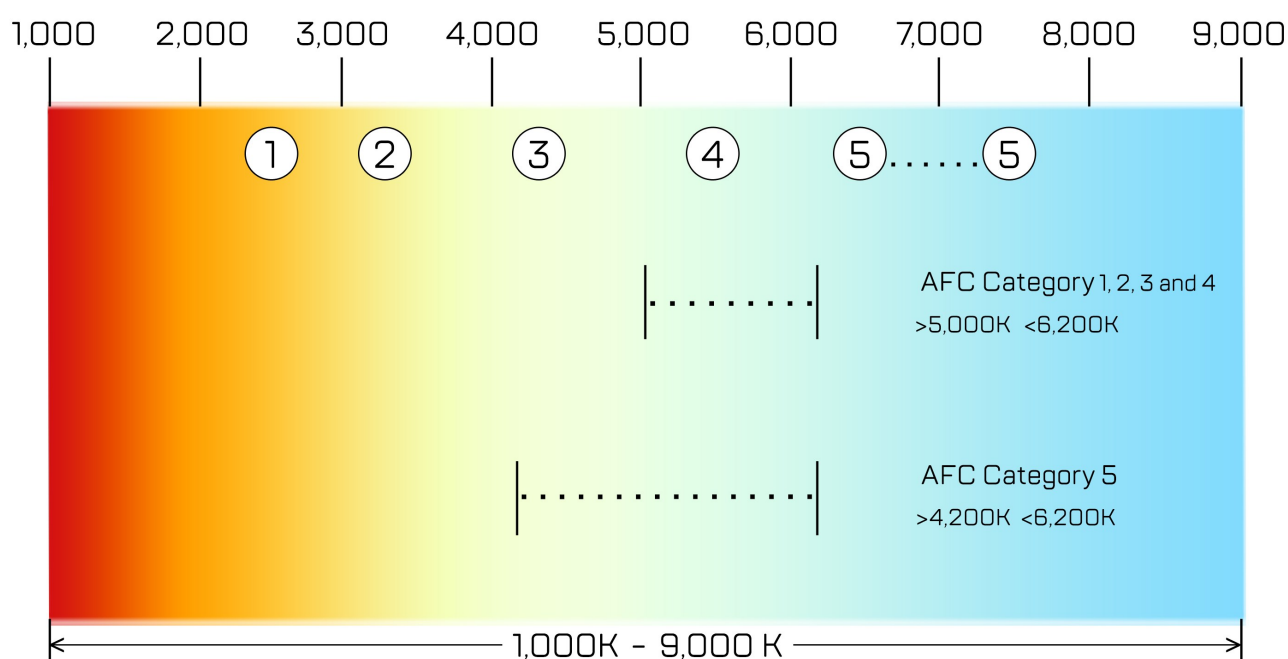
Digital camera technology allows video-produced media to be altered to ‘gain’ colour and contrast, as required to produce the desired colour quality. The required colour temperature range varies depending on the stadium illuminance level, with the minimum and maximum levels across all levels being 4,200K and 6,200K respectively.

It is often necessary to start the broadcasting of a football match in daylight and finish with all the pitch illuminance provided by the floodlighting system. On these occasions, the artificial lighting should generally be used at the beginning of the broadcast to allow a gradual change from daylight to artificial illuminance. During this period, the broadcast engineers will be able to make minor adjustments to the camera settings as required.

The diagram below provides a guide to the colour temperature range required for AFC stadiums.

12.01 Colour temperature guide

- ① Incandescent light bulb (2,680K)
- ② Sun at sunrise/sunset (3,200K)
- ③ White fluorescent (4,200K)
- ④ Sun at daylight/noon (5,500K)
- ⑤ Overcast sky (6,500-7,500K)



13 Colour Rendering

Colour rendering, which is expressed as a score between 0 and 100 Ra on the Colour Rendering Index (CRI), describes how a light source makes the colour of an object appear to human eyes and how well subtle variations in colour shades are revealed. The higher the CRI rating, the better the ability of a light source to accurately reproduce the colours of the object it illuminates

AFC’s requirements stipulate that for good colour production by the artificial illumination system, the CRI rating needs to be greater than Ra 80 for AFC Level 1, 2, 3 & 4 stadiums and greater than Ra 70 for AFC Level 5 stadiums.

The **Colour Rendering Index (CRI)** provides generally a good level of assessment for assessing the chromaticity quality of large scale lighting systems within the environment of stadiums. However it remains important for designers and specifiers of football stadium illuminance systems to be aware of the potential areas of concern in which the CRI may not sufficiently evaluate the colorimetric quality of a light source in a particular range of the spectrum. In video and film production the colour spectrum of luminance produced by LED lighting in specific wavelength bands may not provide sufficient colour rendition. For this reason only the extended CRI(e) should be used during test and evaluation purposes. It should be noted that LED luminaires should be evaluated carefully and it is generally recommended that the CRI R9 (wavelengths longer than 600 nm) values are assessed to be sufficient.

The **Television Lighting Consistency Index (TLCI)** has been developed to provide an alternative method to evaluate the chromaticity quality of a light source when used within the television environment. Rather than assess the performance of a luminaire directly, as is done in the Colour Rendering Index, the TLCI mimics a complete television camera and display, using only those specific features of cameras and displays which affect colour performance. The TLCI is recognised to be an effective method of evaluating the chromaticity quality of a light source and is recommended as good supplementary information to be used when evaluating different light source products

CRI(e)/Ra test colour samples (TCS)

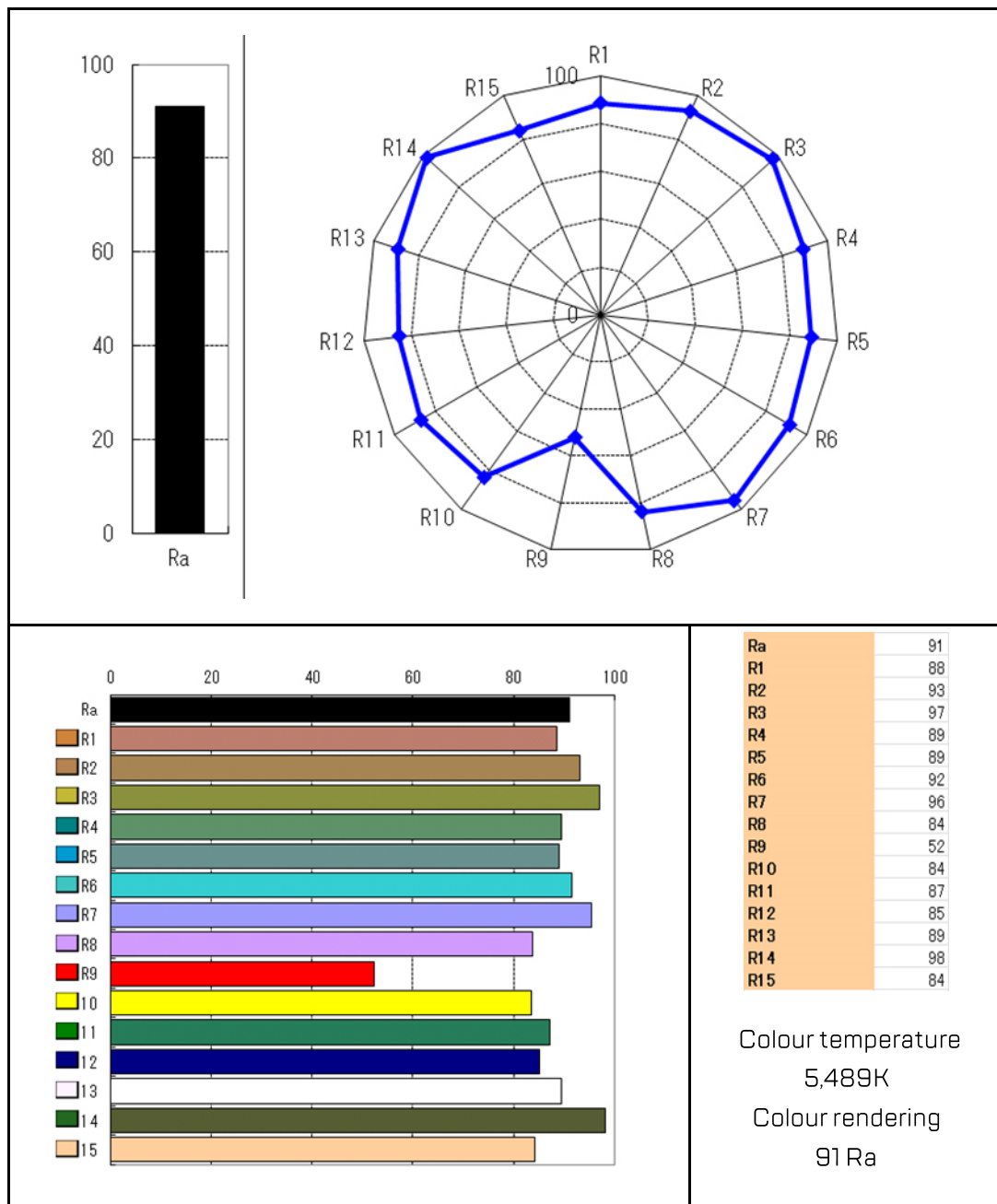
<u>TCS01</u> Light grayish red R1	<u>TCS02</u> Dark grayish yellow R2	<u>TCS03</u> Strong yellow green R3	<u>TCS04</u> Moderate yellowish green R4	<u>TCS05</u> Light bluish green R5
<u>TCS06</u> Light blue R6	<u>TCS07</u> Light violet R7	<u>TCS08</u> Light reddish purple R8	<u>TCS09</u> Strong red R9	<u>TCS10</u> Strong yellow R10
<u>TCS11</u> Strong green R11	<u>TCS12</u> Strong blue R12	<u>TCS13</u> Light yellowish pink R13	<u>TCS14</u> Moderate olive green R14	<u>(TCS15)</u> Asian skin R15

13.01 Chromaticity test

The following diagram provides test information of chromaticity values and should be used as a guide to what is required for all new and old AFC stadiums.

It should be noted that only the extended Colour Rendering Index CRI(e) is used for both test and evaluation purposes.

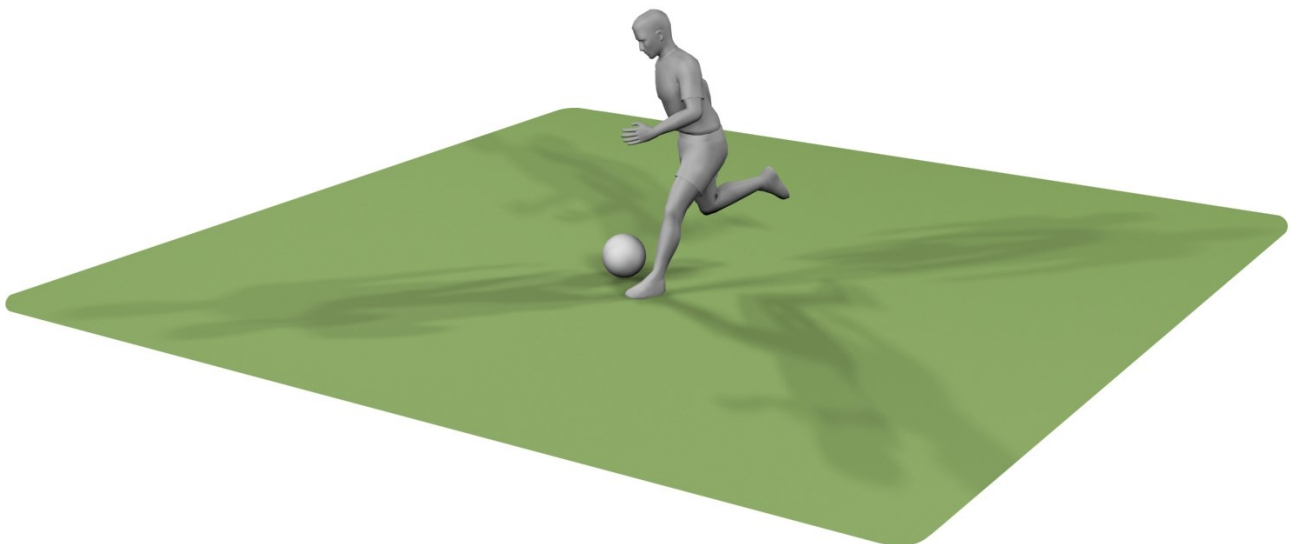
Chromaticity values of lamp performance after testing



14 Player Shadows

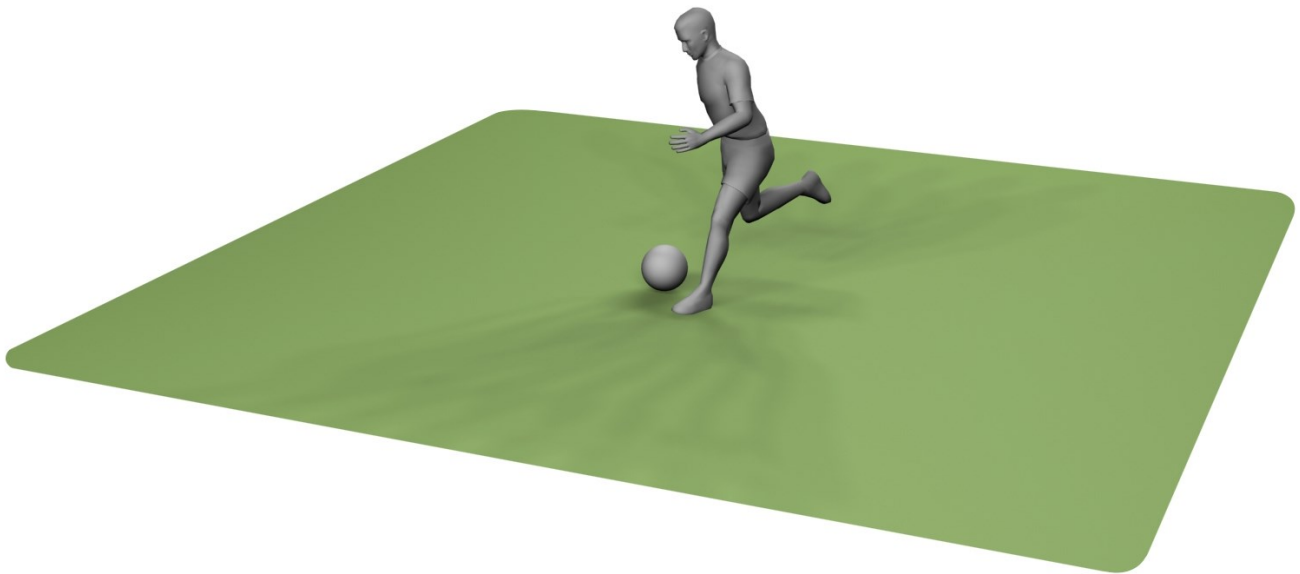
Artificial shadows on the pitch caused by floodlighting systems detract from visual clarity for both spectators and television broadcasters. The shadows impinge upon the viewing experience and should be eliminated where possible or reduced to soft shadows.

During the pitch illuminance design process, it is important to evaluate the production of player shadows and eliminate any hard shadows. This will generally be done by using multiple light sources from various locations for each area of the pitch. This will mean that shadows are reduced and players will benefit from good illuminance modelling around their entire bodies. This will be essential to provide the adequate vertical illuminance and uniformity on all planes.

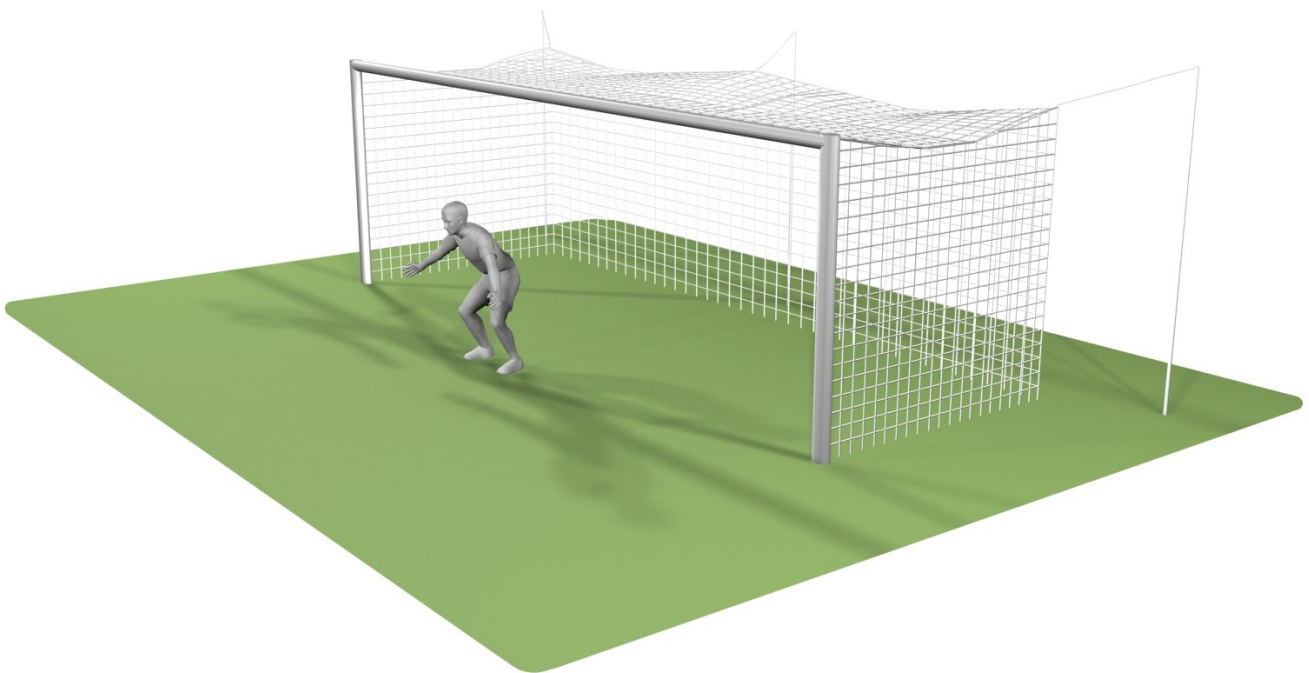


The image above demonstrates the impact of hard player shadows on a football pitch.

In some stadiums, the existing infrastructure will allow for only a four-corner tower/column floodlighting system as the only viable option in terms of the pitch lighting design. Corner tower illuminance systems will generally produce hard shadows, which will vary in different areas of the pitch. With this type of installation, it is not possible to produce consistently soft shadows.



The image above is an example of the soft shadows created by an effective solution involving multiple light sources from different locations.



The image above is an example of hard shadows in the goal area. Shadows should be reduced where possible, while ensuring that players are not hindered by discomfort glare.

15 Maintenance Factor

The average illuminance values required by the tables in Section 4 should be achieved during matches. However, a maintenance factor is used to take account the depreciation of luminous flux caused by the ageing and soiling of the light sources, reflectors and front glasses. In the absence of any other information, the maintenance factor indicated in the relevant table in Section 4 should be used.

However, it is possible to modify that maintenance factor if relevant information is available and systems are in place that facilitate a calculated alteration to that value for a given project.

Reasons to alter the maintenance factor are provided below:

- i. A proactive and frequent maintenance programme. This would require the implementation of a comprehensive and documented schedule of lamp replacement, luminaire cleaning, voltage regulation and illuminance testing. Most stadium pitch illuminance systems would not be suitable for this kind of very proactive maintenance.
- ii. Luminaires that use LED technology. The rate of lumen depreciation is very low with this technology. In order to alter the maintenance factor, a documented schedule of work including luminaire cleaning, voltage regulation and illuminance testing should be implemented. It is not recommended to increase the maintenance factor beyond a value of 0.90 when using LED luminaires in normal circumstances.
- iii. Lumen depreciation may be compensated for by the use of 'constant illumination lamp technology'. This system would need to be available and supported by the luminaire manufacturer, with documented analysis of the pitch illuminance system's performance with voltage regulation. It would also be necessary to provide a schedule of lamp replacement, luminaire cleaning, voltage regulation and illuminance testing.
- iv. If the stadium environment is subject to harsh weather conditions or airborne dirt that could affect the long-term performance of the luminaires, it will be necessary to lower the maintenance factor to an appropriate level. In such circumstances, a study should be carried out to evaluate the conditions. A typical maintenance factor in the above circumstances might be 0.70 or 0.75 for HID luminaires and 0.8 for LED luminaires.

16 Power Supply

It is essential that the power supply for the pitch illuminance system is reliable to ensure that matches and television broadcasts can continue without disruption. A suitable alternative back-up power supply is required if the primary source fails. A power supply evaluation is required by AFC for all existing stadiums. For newly built stadiums, it is recommended that the power supply system is designed to meet the requirements stipulated for the relevant AFC illuminance level.

The following points apply to all levels:

- i. The primary power source is the main power source for the pitch illuminance system – generally the national grid.
- ii. The secondary power source is the alternative power source used as a back-up supply in case the main power source fails – generally an on-site generator.
- iii. The two power supplies should be completely independent of each other, with one system not reliant on the other to operate.
- iv. In the event of disruption to the primary power supply, the secondary power supply should be engaged automatically, with no disruption to the pitch illuminance system or other stadium facilities.
- v. The disruption caused by lighting systems switching to a different power supply will vary depending on the duration of the power disruption and the type of floodlight luminaire. If the primary power supply is disconnected and the secondary power supply is engaged with immediate effect, it may take up to 10–15 minutes before a discharge lighting system is fully operational. This is due to the time required for lamps to cool down before re-striking and then running up to full colour temperature. Pitch illuminance systems using LED luminaires will benefit from instantaneous performance upon switching and therefore the switch-over period of time may be greatly reduced. To ensure pitch illuminance continues without disruption, a UPS system is often used in the pitch illuminance power system.
- vi. If the primary power source fails, the secondary power source must be fully operational within the specified period of time.
- vii. After the initial power failure, the pitch illuminance system must operate at the illuminance level stipulated for the relevant AFC Lighting Category.
- viii. After the initial power failure, the illuminance system must be operational at the required level within 12 minutes on the AFC Power Supply Level 2, 3, and 4.
- ix. Once the pitch illuminance system is being powered by the secondary power supply, it is necessary to ensure that the primary power supply can only be re-engaged manually. This will ensure that any further disruption is minimised and controlled.

The specific power supply requirements for each AFC Lighting Category are listed in the tables on the pages 48 thru to 51.

16.01 AFC Power Supply - Level 1

AFC Power Supply – Level 1

i	Primary power source	Meets 100% of requirements at 100% duty cycle
ii	Secondary power source	Meets 100% of requirements at 100% duty cycle
iii	Primary power supply completely independent from secondary power supply?	Yes
iv	Automatic switching between the two power supplies in the event that one power source fails?	Yes
v	Disruption to the pitch illuminance system caused by failure of the primary power source before the match continuity illuminance conditions are operational	No disruption permitted
vi	Uninterrupted illuminance conditions (as specified in point vii) without disruption after the primary power supply fails?	Yes
vii	Power supplies synchronised by UPS systems or synchronised switching	Yes
viii	Match Continuity Mode (MCM) Illuminance conditions maintained after the primary power supply fails	100% of normal match illuminance conditions required
ix	Illuminance conditions re-established within 12 minutes	100% of normal match illuminance conditions required
x	Manually controlled operation to re-engage primary power supply after power disruption?	Yes

16.02 AFC Power Supply - Level 2

AFC Power Supply – Level 2

i	Primary power source	Meets 100% of requirements at 100% duty cycle
ii	Secondary power source	Meets 100% of requirements at 100% duty cycle
iii	Primary power supply completely independent from secondary power supply?	Yes
iv	Automatic switching between the two power supplies in the event that one power source fails?	Yes
v	Disruption to the pitch illuminance system caused by failure of the primary power source before the match continuity illuminance conditions are operational	Only limited disruption permitted
vi	Uninterrupted illuminance conditions (as specified in point vii) without disruption after the primary power supply fails?	Yes
vii	Match Continuity Mode (MCM) Illuminance conditions maintained after the primary power supply fails	Minimum of Eh 1200 lux Minimum of Ev4 700 lux
viii	Illuminance conditions re-established within 12 minutes	100% of normal match illuminance conditions required
ix	Manually controlled operation to re-engage primary power supply after power disruption?	Yes

16.03 AFC Power Supply – Level 3

AFC Power Supply – Level 3

i	Primary power source	Meets 100% of requirements at 100% duty cycle
ii	Secondary power source	Meets > 70% of requirements at 100% duty cycle
iii	Primary power supply completely independent from secondary power supply?	Yes
iv	Automatic switching between the two power supplies in the event that one power source fails?	Yes – or effective and approved manual procedure
v	Disruption time caused by failure of the primary power source before the secondary power supply is fully operational	Three minutes permitted
vi	Uninterrupted illuminance conditions (as specified in point vii) without disruption after the primary power supply fails?	No
vii	Match Continuity Mode (MCM)	No
viii	Illuminance conditions re-established within three minutes	Minimum of Eh 400 lux Minimum of Ev4 300 lux
ix	Illuminance conditions re-established within 12 minutes	Minimum of 70% of normal match illuminance conditions: Eh average > 840 lux Ev4 average > 560 lux
x	Manually controlled operation to re-engage primary power supply after power disruption?	Yes

16.04 AFC Power Supply - Level 4

AFC Power Supply – Level 4

i	Primary power source	Meets 100% of requirements at 100% duty cycle
ii	Secondary power source	Meets > 70% of requirements at 100% duty cycle
iii	Primary power supply completely independent from secondary power supply?	Yes
iv	Automatic switching between the two power supplies in the event that one power source fails?	Yes – or effective and approved manual procedure
v	Disruption time caused by failure of the primary power source before the secondary power supply is fully operational	5 minutes permitted
vi	Uninterrupted illuminance conditions (as specified in point vii) without disruption after the primary power supply fails?	No
vii	Match Continuity Mode (MCM)	No
viii	Illuminance conditions re-established within three minutes	average Eh 350 lux average Ev4 200 lux
ix	Illuminance conditions re-established within 12 minutes	Minimum of 70% of normal match illuminance conditions: Eh average > 700 lux Ev4 average > 350 lux
x	Manually controlled operation to re-engage primary power supply after power disruption?	Yes

17 LED pitch perimeter display systems

Pitch perimeter display systems provide an opportunity to tailor advertising and stadium management information to each individual event.

AFC's LED pitch perimeter board guidelines should be consulted prior to broadcasts. The LED advertising system should be assessed on installation and tested prior to each broadcast event. The LED display panel should operate within AFC guidelines so as not to affect the camera balance or exposure during the match coverage.

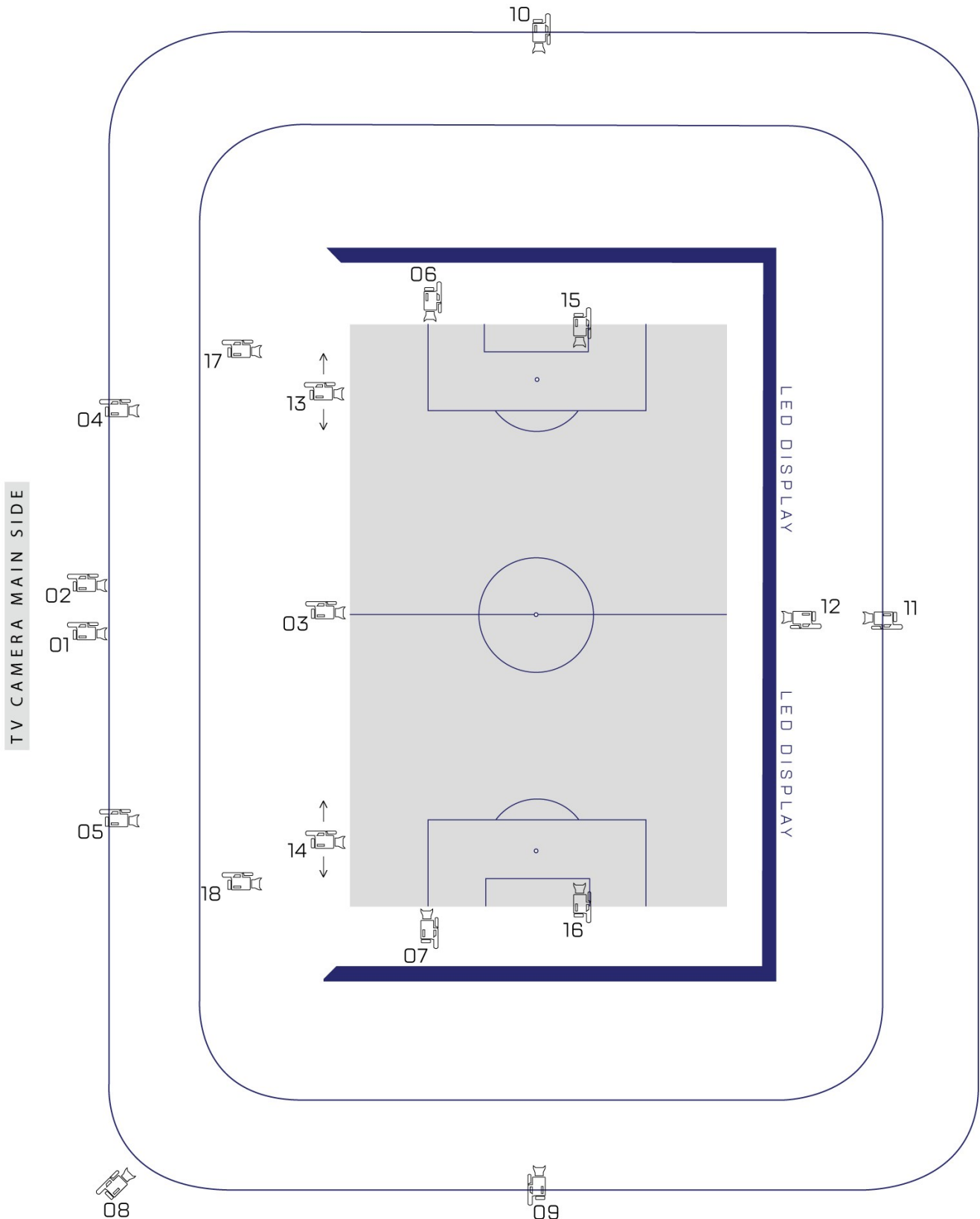
The basic minimum technical specifications are listed below and valid in 2018:

LED configuration:	3-in-1 SMD
Screen height:	Minimum of 90cm; maximum of 100cm (maximum height more for existing systems to avoid losing seats)
Total length:	Minimum length of 246m; ideal length of 257m
Pixel pitch:	Ideal minimum quality level: 12.5mm x 12.5mm (real) (pitch can be symmetrical or asymmetrical) Horizontal viewing angle: Minimum of 140°
Refresh rate:	Minimum of 2,800Hz
Luminance:	Minimum of 5,500Nit
Data feeds:	Control signal connection via two redundant feed points; data ring loop configured

For further information, consult the latest version of the guidelines or contact the AFC.

18 TV broadcast camera plan

It is important that people designing lighting systems for football stadiums understand the requirements of television cameras and the positions that they operate from. Below is a typical camera plan for a high-specification TV broadcast of a football match in the AFC region:



18.01 Key to camera plan

The camera plan is fairly typical for AFC football matches, but some broadcasters and TV directors will deviate from it slightly. The purpose of the plan is to provide further information that may assist stadium lighting designers when designing a pitch illuminance system.

Key to camera plan:

1	MAIN CAMERA
2	BALL FOLLOW
3	CENTER LINE CAMERA
4-5	16-METER LINE
6-7	BEHIND GOAL
8	BEAUTY CAMERA
9-10	HIGH BEHIND
11	REVERSE ANGLE STAND
12	REVERSE ANGLE PITCH SIDE
13-14	STEADICAM / HANDHELD
15-16	NET CAMERAS
17-18	SIX-METER CAMERA

Please note that the camera numbers may be different and will be dependant upon the TV broadcaster of the given event. The above plan should be used as a guide.

The camera plan above does not show the cameras used for presentation/interview and analysis purposes, which are not relevant for this document.

19 Environmental guidance

There are a number of bodies that provide certification for buildings which are designed and constructed in line with strict sustainability guidelines. The most prominent of these bodies are BREEAM and LEED. Both of these bodies provide an extensive list of parameters and checklists which need to be followed and implemented, after which the designated certification body assesses the level of compliance and issues the appropriate certification for the building. Both AFC and FIFA recommend that all modern stadiums adhere to the standards stipulated by one of these two certification bodies. However, it is ultimately down to the stadium developers themselves to (i) be fully aware and supportive of the need for an environmentally responsible approach, (ii) proactively include sustainability initiatives within the project brief and (iii) direct the design consultants accordingly.

19.01 Environmental impact of illuminance

Many countries will have regulations and guidelines aimed at ensuring that the quantity of stray illuminance does not have an undue impact on the local community.

The type of stadium structure and pitch illuminance system will determine the level of illuminance that is produced in areas outside the stadium. A report should be produced with adequate reference points in areas around the stadium showing the illuminance levels created by the pitch illuminance system on the horizontal and vertical planes. The report should comply with the guidelines produced by the relevant authorities and be submitted for their approval.

For reference purposes, pitch illuminance systems should not produce illuminance levels greater than 50 lux on the vertical plane at a height of 1.5m and a distance of 50–200m from the stadium perimeter. For lower AFC Lighting Category stadiums the quantity of stray light produced by the pitch illuminance system should be lower.

19.02 Environmental impact of glare

The pitch illuminance system should be designed in such a way that it does not produce levels of disability glare or discomfort glare that could cause disturbance to people within the local community. Particular attention should be devoted to ensuring that no drivers of vehicles on adjacent roads are affected by the pitch illuminance system.

20 AFC illuminance test report

20.01 AFC pitch illuminance test

AFC uses illuminance test reports to assess the illuminance conditions at venues. Tests should only be carried out by qualified personnel using the correct equipment. Equipment must have been recalibrated within the last 12 months.

The AFC Pitch Illuminance Test Report may be found on pages 58-63 of these guidelines.

20.02 AFC illuminance test procedure

AFC requires that all venues which could potentially host a televised match undergo assessments of their pitch illuminance systems.

Such illuminance tests must be conducted in accordance with the AFC Lighting Guidelines 2018 to ensure a consistent and objective analysis of the illuminance conditions at all relevant stadiums.

The illuminance test procedure and requirements are detailed below.

Inspection equipment

The illuminance meter used for the illuminance test should be suitable for a floodlighting environment, with a wide angle receptive light sensor. The illuminance meter must be of high quality and recalibrated on an annual basis.

Test procedure

A football pitch measures 68m by 105m. This area is divided up into a grid containing 96 points. At each point, an illuminance test is carried out to measure both the horizontal illuminance and the vertical illuminance at four different angles. Thus, the test will require 480 illuminance tests in total. Please ensure that the correct orientation is used when marking out the grid positions. The orientation can be seen in the pitch orientation plan.

Care should be taken when recording illuminance readings. The illuminance meter should always be positioned at the correct angle for the intended measurement. Personnel carrying out the test must not create any shadows that could impinge upon the illuminance meter. The meter should be 1m above the playing surface.

The illuminance reading for each grid point should be recorded on the relevant illuminance grid plan.

Horizontal test:

The meter is positioned facing upwards, 1m above the playing surface, and parallel to the pitch, at every grid point.

Vertical test

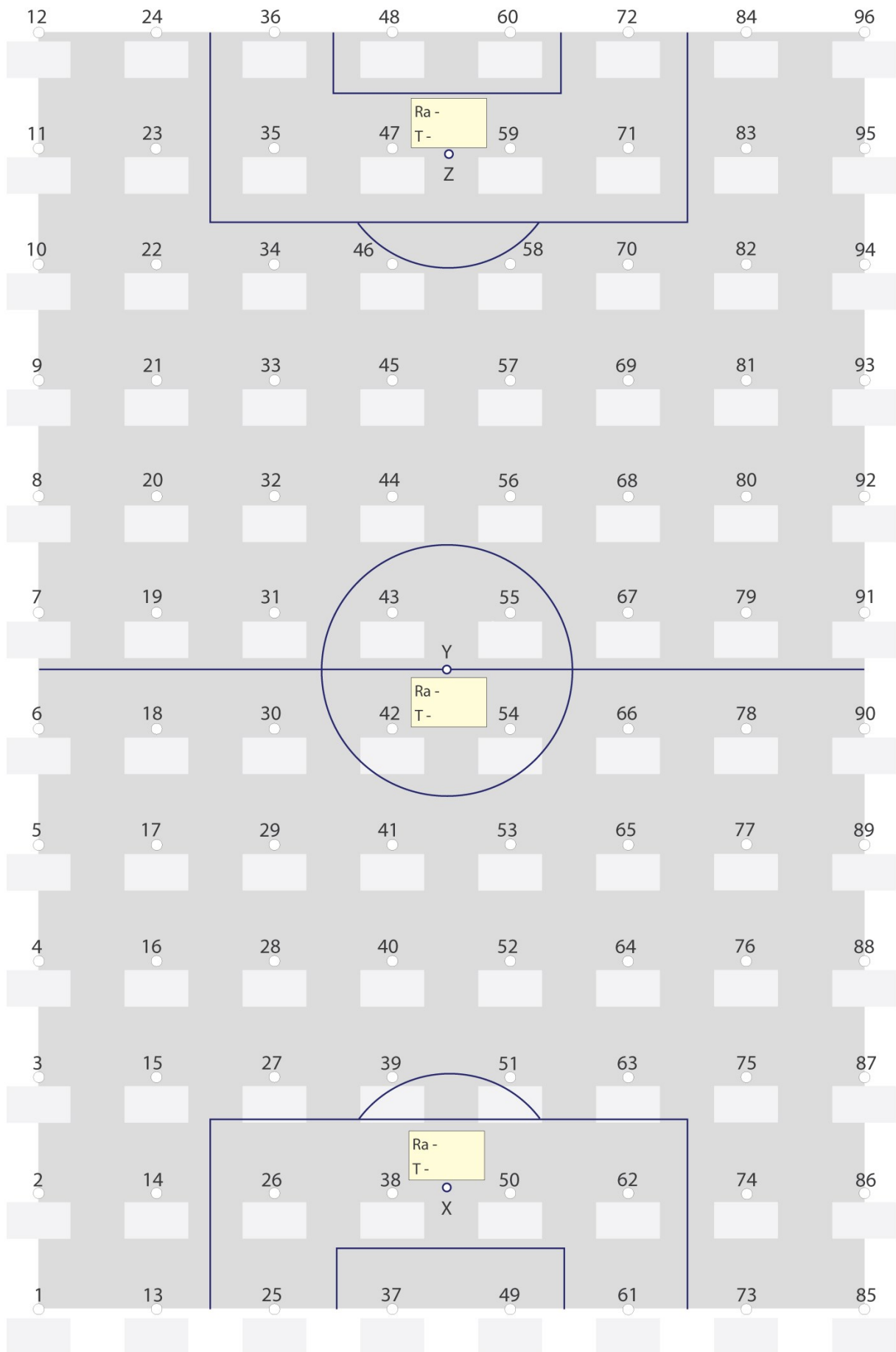
The meter is positioned perpendicular to the pitch, 1m above the playing surface, at every grid point. The meter should then be adjusted for each of the four test positions. The test positions are indicated on the vertical illuminance grid plan and are at 0°, 90°, 180° and 270°. This procedure should be repeated at all 96 grid points.

20.03 AFC illuminance test report template

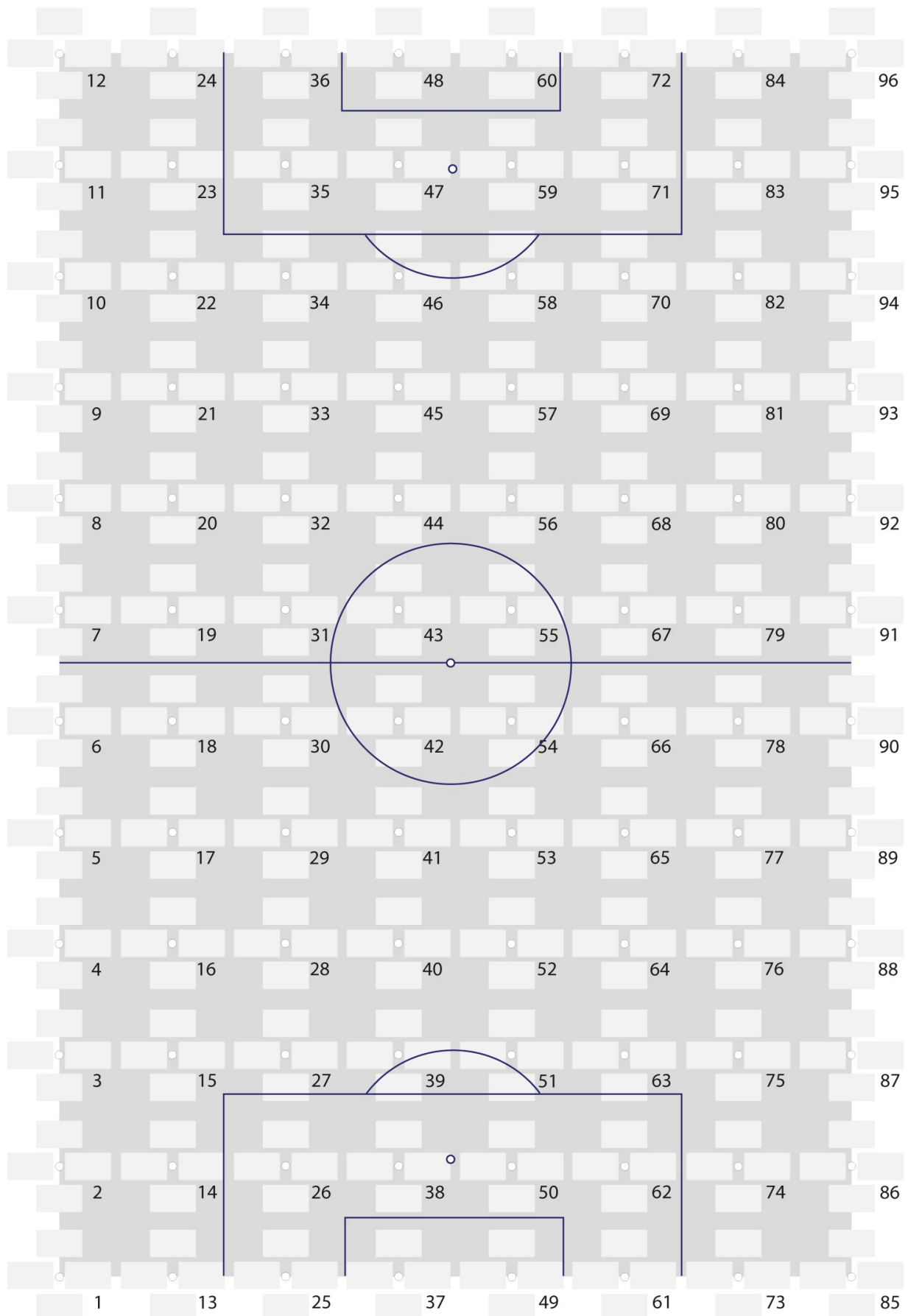
AFC Illuminance Test

Name of stadium:	
Name of club/stadium	
Date of inspection:	
Time:	
Luminaire 1:	
Model:	
Lamp:	
Luminaire 2:	
Model:	
Lamp:	
Illuminance Meter:	
Serial Number:	
Calibration Date:	
Colour Meter:	
Serial Number:	
Calibration Date:	
Pitch Measurements:	
Weather Conditions:	
Illuminance Test Company:	
Address:	
Phone / email:	
Inspection by:	
Signature:	

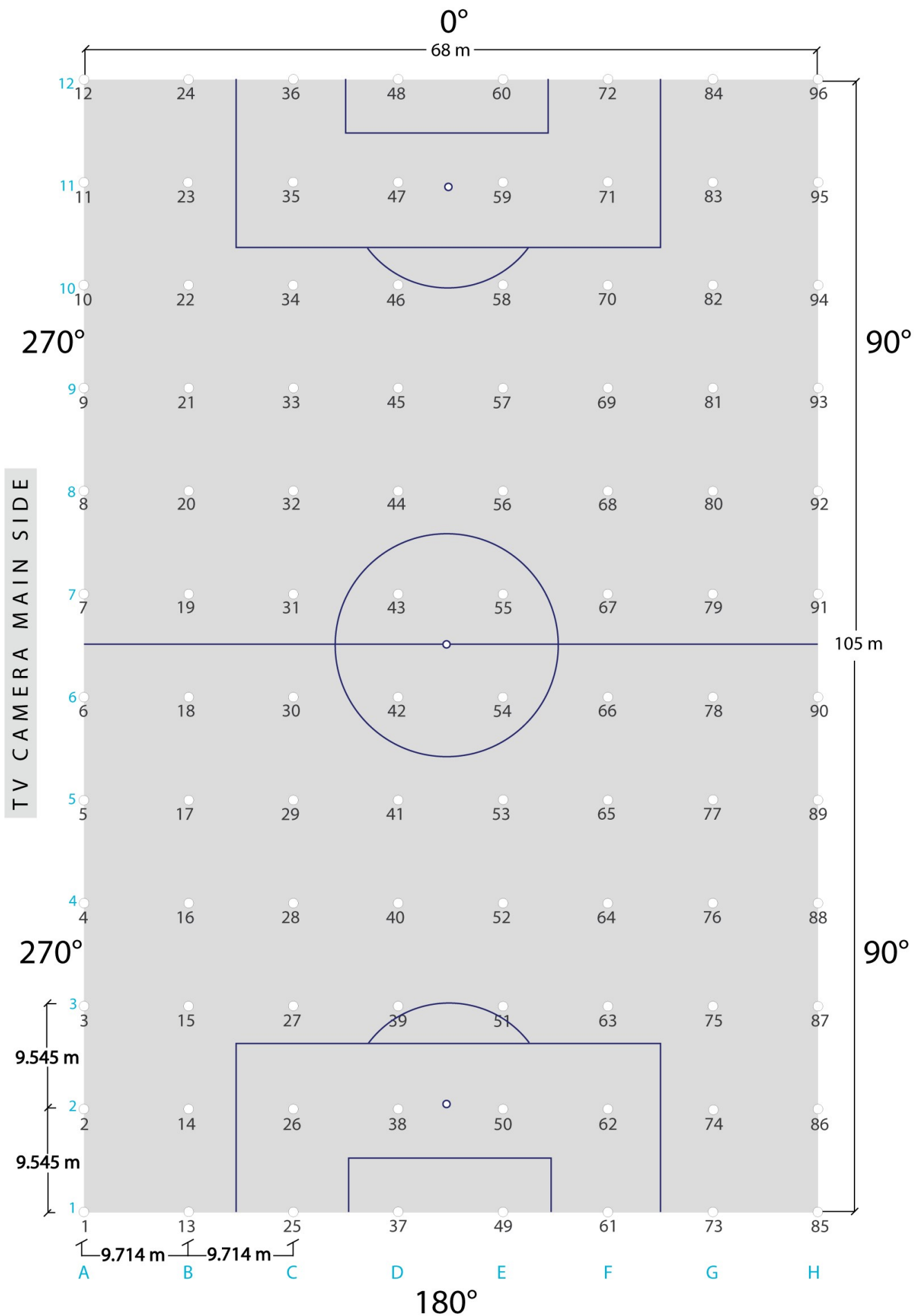
Horizontal illuminance grid plan



Vertical illuminance grid plan



Illuminance test – pitch orientation plan



Summary of report data

Stadium name:	<input type="text"/>
Test date:	<input type="text"/>

Test measurements	Stadium values
Eh min minimum horizontal lux value	
Eh ave average horizontal lux value	
Eh max maximum horizontal lux value	
Uniformity U1h	
Uniformity U2h	

Ev ave-0° average illuminance on 0° vertical plane	
Uniformity U1v-0°	
Uniformity U2v-0°	

Ev ave-90° (average illuminance on 90° vertical plane)	
Uniformity U1v-90°	
Uniformity U2v-90°	

Ev ave-180° (average illuminance on 180° vertical plane)	
Uniformity U1v-180°	
Uniformity U2v-180°	

Ev ave-270° (average illuminance on 270° vertical plane)	
Uniformity U1v-270°	
Uniformity U2v-270°	

Flicker Factor (FF) average value	
--	--

Glare rating (GR)	
Colour rendering (Ra)	
Colour temperature (K)	

Pitch illuminance power supply

Power supply evaluation

It is essential that the power supply for the pitch illuminance system is reliable to ensure that matches and television broadcasts can continue without disruption. A suitable alternative secondary power supply is also required in case the primary source fails in some way.

Please complete the form below, providing details of the power supply and other operational information:

Name of stadium:		<input type="text"/>	
Grid power supply:		<input type="text"/>	
No. of feeder lines+transformers/kV/MW:		<input type="text"/>	
Supply design (e.g. open half-ring):		<input type="text"/>	
Back-up power supply (Second grid source / Generator / UPS batteries)			
Type: Grid	<input type="text"/>	Generator (no/MW)	<input type="text"/>
		UPS (no/kW)	<input type="text"/>
Switching between grid and back-up power supplies			
Back-up operation (parallel/standby/standby running):		<input type="text"/>	
Is the switchover process (grid to back-up) automatic:		Yes <input type="checkbox"/>	No <input type="checkbox"/>
Please describe the process of back-up operation in case of a grid power failure:			
<input type="text"/>			
<input type="text"/>			
<input type="text"/>			
Is a UPS battery system installed in the stadium illuminance system?		Yes/No	<input type="checkbox"/>
What percentage of lights are connected to the UPS battery system?			<input type="text"/>
What is the operations time at full load of the UPS system?		Minutes	<input type="text"/>
Type of lights (indicate HID or LED)			
Cold re-strike % overall / % on uninterrupted back-up:		HID	LED
Hot re-strike % overall / % on uninterrupted back-up:		HID	LED
Please provide an electrical overview diagram of the stadium power system from mid-voltage /0.4kV transformers, including main switch boards and back-up systems towards the illuminance system. The diagram needs to show the operation process for the illuminance system in case of a grid power failure.			

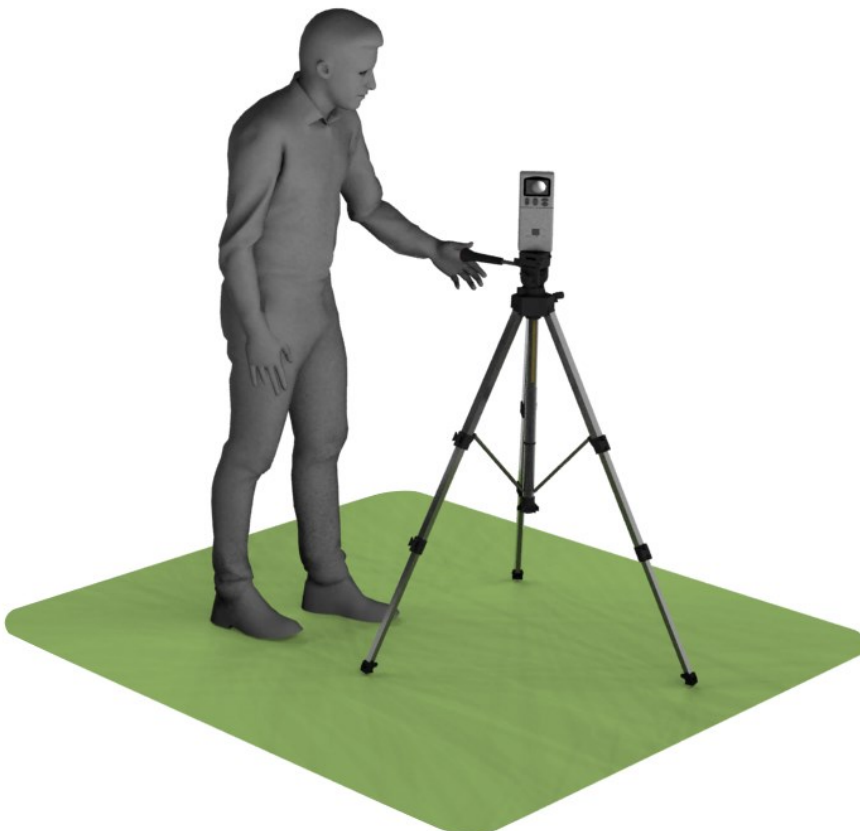
Measurement of illuminance



HORIZONTAL ILLUMINANCE TEST

The receptor head is mounted parallel to the pitch, 1m above the pitch surface. An illuminance reading should be taken at all 96 points.

Ensure that the meter is always positioned in the same way and is level with the ground. This can be achieved with the aid of a spirit level or another such device.



VERTICAL ILLUMINANCE TEST

The receptor head is mounted perpendicular to the pitch, 1m above the pitch surface. A vertical illuminance reading should be taken at 0°, 90°, 180° and 270° at all 96 points.

Ensure that the meter is always positioned in the same way and is level. This can be achieved with the aid of a spirit level or another such device.

21 Glossary of terms

E	The quantity of light falling on a surface at a given point, measured in lux.
Eh ave	The average illuminance on the horizontal plane for the specified reference test points 1.0m above the pitch surface, measured in lux.
Eh max	The maximum illuminance on the horizontal plane for the specified reference test points 1.0m above the pitch surface, measured in lux.
Eh min	The minimum illuminance on the horizontal plane for the specified reference test points 1.0m above the pitch surface, measured in lux.
Ev ave	The average illuminance on the vertical plane for the specified reference test points 1.0m above the pitch surface, measured in lux.
Ev 270°	The illuminance on the 270° vertical plane for the specified reference test point 1.0m above the pitch surface, measured in lux.
Ev4 (4 point ave)	The average of the illuminance values for the 4 vertical planes at a specified reference test point 1.0m above the pitch surface, measured in lux.
Ev4-96 min	The minimum value for Ev4 (4 point ave) across the 96 reference points.
Ev4-96 max	The maximum value for Ev4 (4 point ave) across the 96 reference points.
Ev4-96 ave	The average value for Ev4 (4 point ave) across the 96 reference points, measured in lux. Calculated by adding together the (4 point ave) values for Ev4 (4 point ave) for all 96 reference points and dividing the total by 96.
Ev 270° ave	The average illuminance on the 270° vertical plane for the specified reference test points 1.0m above the pitch surface, measured in lux. Calculated by adding together the values for Ev 270° for all 96 reference points and dividing the total by 96.
Ev 0° max	The maximum illuminance on the 0° vertical plane for the specified reference test points 1.0m above the pitch surface, measured in lux.
Ev 180° min	The minimum illuminance on the 180° vertical plane for the specified reference test points 1.0m above the pitch surface, measured in lux.
Ecam ave	The average illuminance towards the main camera for the specified reference test points 1.0m above the pitch surface, measured in lux.
lux	The unit of measurement for illuminance. 1 lux = 1 lumen/m ²
lumen (lm)	The unit of measurement for luminous flux.

CRI	Colour Rendering Index. This measures the quality of the colour reproduction produced by a light source relative to natural daylight on a scale of 0 Ra to 100 Ra.
Ra	The specific value given to a light source to indicate the level and quality of colour reproduction (CRI) on a scale of 0 Ra to 100Ra.
Tk	The colour temperature of a light source, measured in kelvins (K).
FF	The flicker factor – the modulation of luminance on a given plane during a complete cycle. This denotes the relationship between the maximum luminance value and the minimum luminance value, expressed as a percentage.
GR	The glare rating – the degree of discomfort caused by the illuminance system to a person on the pitch. The glare rating is calculated at a height of 1.75m above the pitch surface.
U1h	A measure of horizontal uniformity of illuminance. The ratio of minimum horizontal illuminance to maximum horizontal illuminance across all 96 reference points.
U2h	A measure of horizontal uniformity of illuminance. The ratio of minimum horizontal illuminance to average horizontal illuminance across all 96 reference points.
U1v	A measure of vertical uniformity of illuminance. The ratio of minimum vertical illuminance to maximum vertical illuminance on the given plane across all 96 reference points.
U2v	A measure of vertical uniformity of illuminance. The ratio of minimum vertical illuminance to average vertical illuminance on the given plane across all 96 reference points.
U1v (4-96 point)	A measure of vertical illuminance and illuminance modelling uniformity. The ratio of Ev4 (4 point min) minimum vertical illuminance to Ev4 (4 point max) maximum vertical illuminance across all 96 reference points.
U2v (4-96 point)	A measure of vertical illuminance and illuminance modelling uniformity. The ratio of Ev4 (4 point min) minimum vertical illuminance to Ev4 (4 point ave) average vertical illuminance across all 96 reference points.
U1v-270°	A measure of vertical uniformity of illuminance on the 270° plane. The ratio of minimum vertical illuminance to maximum vertical illuminance across all 96 reference points.
U2v-270°	A measure of vertical uniformity of illuminance on the 270° plane. The ratio of minimum vertical illuminance to average vertical illuminance across all 96 reference points.
MAUR	The minimum adjacent uniformity ratio. The maximum permissible difference between any two adjacent points on any given plane in any direction is determined by the MAUR stipulated in the relevant table in Section 4.
MF	The maintenance factor – a factor used to calculate the deterioration of lamps and luminaires' performance.
UPS	An uninterruptible power supply – a power system providing instantaneous power (normally by means of energy stored in batteries) in the event that the primary power source fails.

- PISM** Pitch illuminance switch mode. The pitch illuminance system should be pre-programmed with various different modes, catering for a number of different situations. The number of modes may vary from stadium to stadium.
- FMM** Full match mode. This involves the complete pitch illuminance system operating in match conditions for the relevant AFC illuminance category.
- MCM** Match continuity mode. This is the mode that is engaged to allow a match to continue after the primary power supply has failed. In terms of the uniformity of illuminance, only U1 is evaluated. It should be greater than 0.5 on the horizontal plane and 0.4 on the vertical plane.
- TM** Training mode. This mode provides sufficient pitch illuminance for training requirements.
- MM** Maintenance mode. This mode provides sufficient pitch illuminance for maintenance requirements.

Main camera side

This indicates the plane of the main camera position for a television broadcast. The main TV camera will be positioned on the TV camera gantry. This is used in this guide to ensure that the pitch orientation is correct and consistent for all stadiums. The main camera side is also referred to as the 270° plane.

Main camera position

This indicates the position of the main camera for a television broadcast. The main TV camera will be positioned on the TV camera gantry. This is used in this guide to ensure that the pitch orientation is correct and consistent for all stadiums.

International Illuminance Services
www.i-i-s.eu